



MetPak

User Manual

Doc No. 1575-PS-0001

Issue 2

Gill Instruments Limited

Saltmarsh Park,
67 Gosport Street,
Lymington,
Hampshire.
SO41 9EG
UK

Tel: +44 (0) 1590 613500

Fax: +44 (0) 1590 613501

E-mail: anem@gill.co.uk

Website: www.gill.co.uk



Contents

Contents.....	2
1 FOREWORD	3
2 INTRODUCTION	3
3 PRINCIPLE OF OPERATION.....	4
3.1 WIND SPEED AND DIRECTION SENSOR.....	4
3.2 RADIATION SHIELD	5
3.3 TEMPERATURE AND RELATIVE HUMIDITY SENSOR	6
4 OPTIONS AND SPECIFICATION	7
4.1 OPTIONS AND PART NUMBERS AVAILABLE.....	7
4.2 SPECIFICATION	8
4.3 ASPIRATION SHIELD	9
4.4 TEMPERATURE AND HUMIDITY SENSOR.....	9
4.5 COMPLETE ASSMEBLY	9
5 INSTALLATION REQUIREMENTS	10
6 INSTALLATION.....	11
6.1 INSTALLATION GUIDELINES.....	11
6.2 BENCH SYSTEM TEST	11
6.3 ELECTRICAL.....	12
<i>Cable</i>	<i>12</i>
<i>Connecting the Analogue Output (Option 3 and 4)</i>	<i>13</i>
<i>Connecting to an SDI-12 Interface (Option 1 and 2).....</i>	<i>14</i>
<i>Connections to WindSonic cable for MetPak options 5 and 6</i>	<i>15</i>
7 MECHANICAL	16
<i>Orientation</i>	<i>16</i>
<i>Alignment.....</i>	<i>16</i>
<i>Mounting</i>	<i>16</i>
8 OUTPUT FORMATS.....	18
8.1 GILL FORMAT– POLAR, CONTINUOUS (DEFAULT FORMAT) AVAILABLE FOR RS232 PROGRAMMING PORT.	18
9 ANALOGUE OUTPUTS AND OPTIONS	20
9.1 ENTERING CONFIGURATION MODE (SEE SECTION 8.1 FOR MESSAGE FORMAT)	21
9.2 RETURNING TO MEASUREMENT MODE	21
9.3 CHECKING THE CONFIGURATION	21
9.4 CHANGING A SETTING	21
9.5 POWER-UP MESSAGE.....	21
9.6 ANALOGUE SETTINGS	22
<i>Polar mode direction calculation</i>	<i>22</i>
<i>Magnitude scaling</i>	<i>22</i>
<i>Error conditions</i>	<i>22</i>
<i>Disabled outputs.....</i>	<i>22</i>
9.7 CONFIGURATION / DIAGNOSTIC INFORMATION	23
10 METPAK SDI-12.....	23
10.1 SDI-12 COMMANDS	24
11 MAINTENANCE & FAULT-FINDING.....	25
11.1 CLEANING.....	25
11.2 SERVICING	25
11.3 FAULT-FINDING.....	25
11.4 RETURNING UNIT.....	26
11.5 STATUS (ERROR) CODES	26
12 TESTS.....	27
12.1 BENCH TEST	27
12.2 SELF-TEST (STILL AIR) FOR WINDSONIC WIND SENSOR	27
12.3 CALIBRATION.....	27
13 APPENDICES.....	28
13.1 GLOSSARY & ABBREVIATIONS	28
13.2 GUARANTEE.....	28
13.3 ELECTRICAL CONFORMITY	29
13.4 MODEL 41003 MULTIPLATE RADIATION SHIELD MANUAL	30
13.5 ROTRONIC HYRGOCLIP S3 MANUAL.....	0
13.6 CAMPBELL CS215 TEMPERATURE AND HUMIDITY PROBE MANUAL	0

1 FOREWORD

Thank you for purchasing the MetPak manufactured by Gill Instruments Ltd. To achieve optimum performance we recommend that you read the whole of this manual before proceeding with use. Do NOT remove black “rubber” transducer caps.

Gill products are in continuous development and therefore specifications may be subject to change and design improvements without prior notice.

The information contained in this manual remains the property of Gill Instruments and should not be copied or reproduced for commercial gain.

2 INTRODUCTION

The Gill MetPak is a compact and lightweight multi-sensor instrument that measures the most essential weather parameters. Gill ultrasonic technology, as used in the proven WindSonic instrument, measures wind speed and direction. Temperature and humidity are measured using industry standard probes housed in a naturally aspirated radiation shield. The instrument uses a rugged U-bolt mounting clamp that attaches to any vertical pipe up to 50mm diameter.

The instrument can be supplied with either a digital SDI-12 output or a four channel analogue output option, suitable to interface to industry standard data loggers. Low power consumption enables the instrument to be used in remote locations where power is at a premium. An electrical junction box is fitted to the mounting bracket allowing convenient termination of all electrical cables.

3 PRINCIPLE OF OPERATION

3.1 Wind Speed and Direction Sensor

The MetPak uses the WindSonic wind speed and direction sensor. WindSonic measures the times taken for an ultrasonic pulse of sound to travel from the North transducer to the South transducer, and compares it with the time for a pulse to travel from S to N transducer. Likewise times are compared between West and East, and E and W transducer.

If, for example, a North wind is blowing, then the time taken for the pulse to travel from N to S will be faster than from S to N, whereas the W to E, and E to W times will be the same. The wind speed and direction can then be calculated from the differences in the times of flight on each axis. This calculation is independent of factors such as temperature.

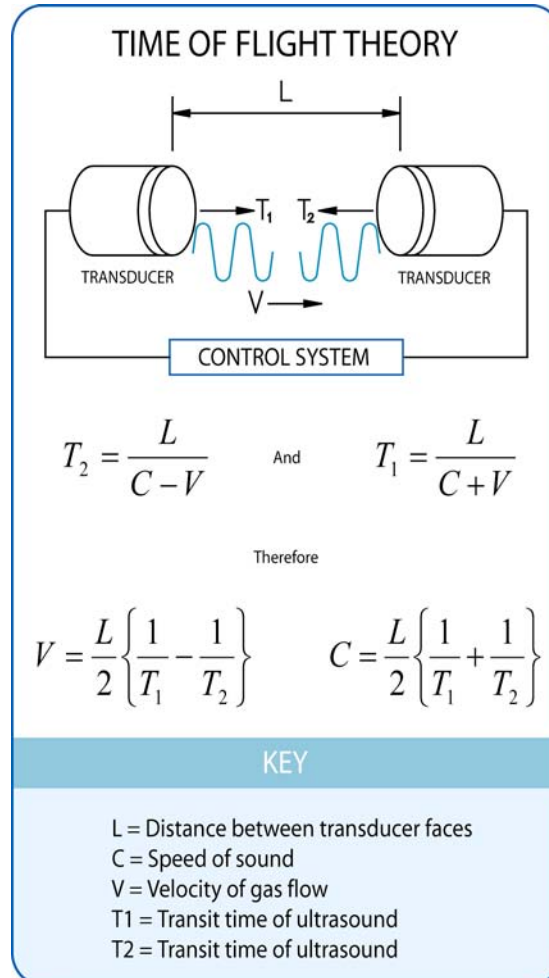


Figure 1 Time of Flight details

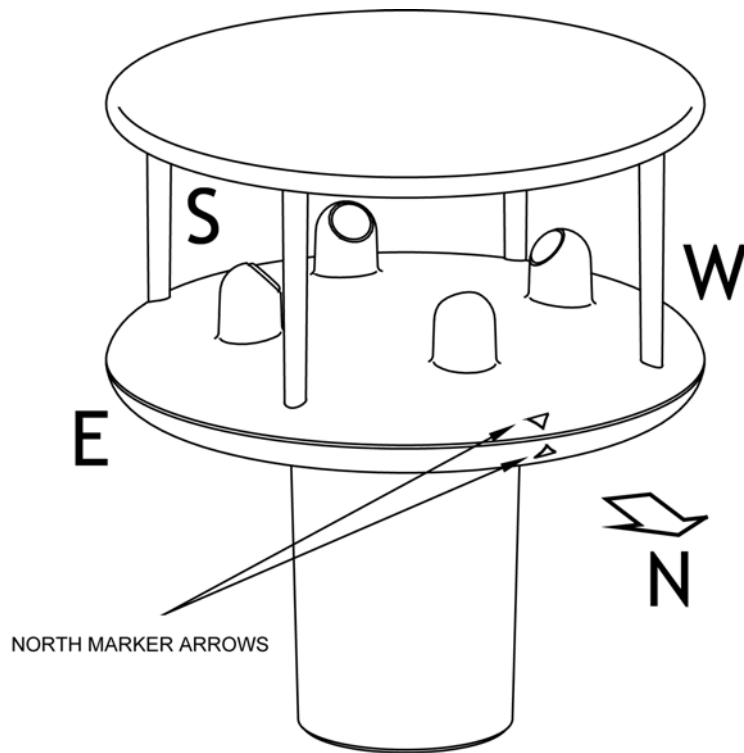


Figure 2 Compass Points

3.2 Radiation Shield

The Multi-Plate Radiation Shield protects temperature and relative humidity sensors from error-producing solar radiation and precipitation. This shield relies on a combination of plate geometry, material and natural ventilation to provide effective shielding

3.3 Temperature and Relative Humidity Sensor

Two types of temperature and humidity probes are available dependant on the option ordered.

Campbell CS215 temperature and relative humidity probe.

The CS215 probe utilises a novel single chip element that incorporates both a temperature and RH sensor. Each element is individually calibrated with the calibration corrections stored on chip. The element is easily changed in the field. Replacement of the element effectively fully recalibrates the probe both for temperature and humidity thus minimising downtime and calibration costs.

Low power electronics within the CS215 controls the measurement made by the sensor element, applies temperature and linearization corrections to the readings and presents the data via an SDI-12 compatible interface to a datalogger.

The probe is fitted with a custom-made, yet low-cost sintered plastic filter to minimise the effects of dust and dirt on the sensor. The filter is lightweight and hydrophobic thereby minimising the effect of the time response of the sensor.

The probe housing is designed to withstand permanent exposure to all weathers and to fit into a range of radiation shields including lower cost compact shields.

Rotronic HygroClip.

The HygroClip modules are complete instruments, with integrated temperature compensation and highly flexible power requirements. Calibration data is maintained within the integrated electronics. It provides linear analogue output signals for % rh and °C.

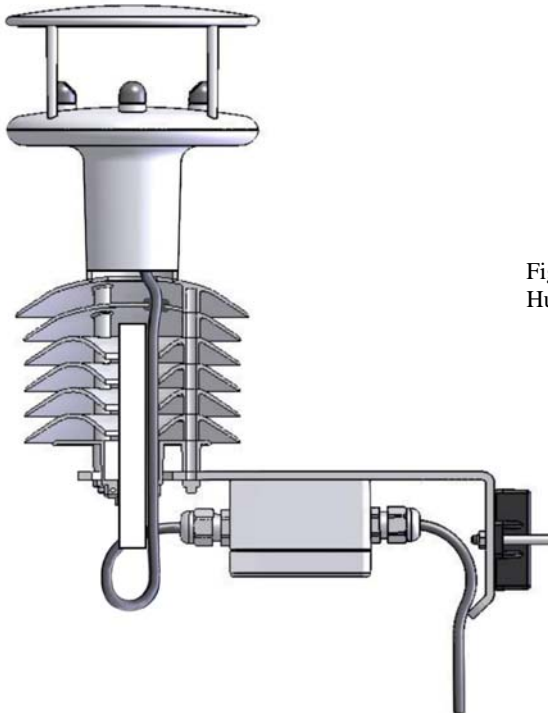
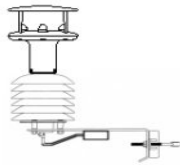
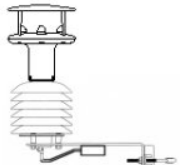
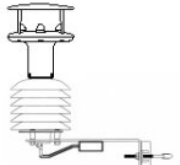
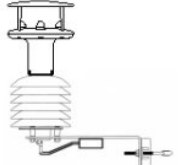




Fig 3 Position of Temperature and Relative Humidity Probe in the Radiation Shield

4 OPTIONS AND SPECIFICATION

4.1 Options and Part Numbers Available

Product and Part No.	Description
<p>Option 1</p>  <p>1575-PK-001</p>	<p>MetPak</p> <p>Wind speed, wind direction, temperature & humidity, with SDI-12 output. White WindSonic sensor mounted on a six-plate aspiration shield, fitted with Campbell Scientific CS215 Temperature and Humidity probe. Complete with mounting bracket and handbook.</p>
<p>Option 2</p>  <p>1575-PK-002</p>	<p>MetPak</p> <p>White WindSonic Windspeed & direction sensor with SDI-12 output, mounted on a six plate aspiration shield. Customer to fit temperature and humidity sensor of their choice up to 15mm dia. Complete with mounting bracket and handbook.</p>
<p>Option 3</p>  <p>1575-PK-003</p>	<p>MetPak</p> <p>Wind speed, wind direction, temperature & humidity, with analogue output. White WindSonic sensor mounted on a six-plate aspiration shield, fitted with Rotronic HygroClip S3 Temperature and Humidity probe. Complete with mounting bracket and handbook.</p>
<p>Option 4</p>  <p>1575-PK-004</p>	<p>MetPak</p> <p>White WindSonic Windspeed & direction sensor with analogue output, mounted on a six plate aspiration shield. Customer to fit temperature and humidity sensor of their choice up to 15mm dia. Complete with mounting bracket and handbook.</p>
<p>Option 5</p>  <p>1575-PK-005</p>	<p>WindSonic for MetPak</p> <p>White WindSonic Windspeed & Direction, sensor fitted with 1 meter of cable and aspiration shield mounting adaptor and SDI -12 output. Distributor to mount on their own aspiration shield and fit their own probe.</p>

<p>Option 6</p>  <p>1575-PK-006</p>	<p>WindSonic for MetPak</p> <p>White WindSonic Windspeed & Direction, sensor fitted with cable and aspiration shield mounting adaptor and analogue output. Distributor to mount on their own aspiration shield and fit their own probe.</p>
--	--

4.2 Specification

Wind Sensor

Output		
Units of measure	Metres/second (m/s), Kilometres per hour (kph),	Knots, Miles per hour (mph), Feet per minute (fpm)
Output frequency	1, 2, or 4 outputs per second	
Parameters or	Digital	Analogue
	Polar - Speed and Direction UV - 2 axis, signed Speed	Polar - Speed and Direction Tunnel - U Speed and U Direction
Wind Speed		
Range	0 – 60 m/s	0 – 30m/s, 0 – 50m/s, 0 – 60m/s,
Accuracy	± 2% (12m/s)	± 2% (12m/s)
Resolution	0.01 m/s	0.01 m/s
Wind Direction		
Range	0 - 359°	0 - 359° or 0 - 539° (Wraparound mode)
Accuracy	± 3° (20m/s)	±3° (20m/s)
Resolution	1°	1°
Output formats		
0-5V	± 1% of full scale N.B. Analogue output impedance = 1KΩ	
Data Logger	SDI-12 V1.3	
Anemometer status	Status OK and Error codes included as part of output message from RS232 programming port.	
Environmental		
Moisture protection	IP65	
Temperature	Operating -35°C to +70°C Storage -40°C to +80°C	
Humidity	Operating <5% to 100%	
EMC	EN 61000-6 - 3 (Emissions) EN 61000-6 - 2 (Immunity)	
Standards	Manufactured within ISO9001: 2000 quality system	

4.3 Aspiration Shield

Secification for model 41003 is contained in appendix 13.4

4.4 Temperature and Humidity Sensor

Specification for the CS215 and HygroClip,temperature and relative humidity are contained in appendices 13.5 and 13.6

4.5 Complete Assmebly

Material:-

White thermoplastic UV-stabalized for long term weather resistance. Gloss white painted aluminium mounting bracket (with moulded plastic V-block and satinless steel U-bolt) which allows it to be attached to a vertical pipe of any diameter between 25mm and 50mm.

Power Requirement:-

Option 1 6-16Vdc @ 22mA typical

Option 3 10-28Vdc @ 28mA typical

Power requirements for the other options are dependant on temperature and relative humidity probes fitted. Refere to manuals in appendices 13.5 and 13.6.

Size and Weight:-

Size 142mm dia x 380mm height (instrument)

Weight 1.1kg (including bracket)

For delivery the MetPak is contained in custom designed packaging. All the packaging should be retained for use if the unit has to be returned at any time.

5 INSTALLATION REQUIREMENTS

Host system

- Access to the RS232 output from the MetPak is provided for programming and fault detection via a socket in the junction box. This can be connected to a PC fitted with a RS232 interface, and a suitable Terminal Emulation software package. (For example Hyperterminal for Windows™ 9x, Windows™ 2000 and XP or Terminal for Windows™ 3.n will normally be available on your PC.) WindCom is available from the Gill website.
- Equipment with input/output compatibility to the WindSonic Option selected.
For example, Chart recorder or Data logger, using the WindSonic Analogue output or SDI-12 output.

Cable - To connect between the MetPak and the host system

See Section 7.3 Cable type for cable specification.

- There are restrictions on the maximum cable lengths for correct operation.
- The cable should be routed up the inside of the mounting tube.

Mounting Pipe

- Mounting fits vertical pipe 25-50mm (1-2in) diameter.
See Figure 3 in section 7.4 Alignment & Mounting Details
- For non-hostile environments, Aluminium tube can be used.
- For hostile environments, you should select a material suitable for the intended environment. For example, stainless steel 316 for marine use.

6 INSTALLATION

Do NOT remove the black “rubber” transducer caps. Warranty is void if the coloured security seal is damaged or removed.

6.1 Installation Guidelines

The MetPak has been designed to meet and exceed the stringent standards listed in its specification.

As with any sophisticated electronics, good engineering practice should be followed to ensure correct operation.

- Always check the installation to ensure the MetPak is not affected by other equipment operating locally, which may not conform to current standards, e.g. radio/radar transmitters, boat engines, generators etc.

Guidelines –

- Avoid mounting in the plane of any radar scanner – a vertical separation of at least 2m should be achieved.
- Radio transmitting antennas, the following minimum separations (all round) are suggested
 - VHF IMM – 1m
 - MF/HF – 5m
 - Satcom – 5m (avoid likely lines of sight)
- Use cables recommended by Gill. If cables are cut and re-connected incorrectly (perhaps in a junction box) then EMC performance may be compromised if cable screen integrity is not maintained.
- Earth loops should not be created – wire the system in accordance with the installation guidelines.
- Ensure the power supply operates to the MetPak specification at all times.

Avoid turbulence caused by surrounding structures that will affect the accuracy of the sensors such as trees, masts and buildings. The WMO make the following recommendations:

- The standard exposure of wind instruments over level open terrain is 10m above the ground. Open terrain is defined as an area where the distance between the sensor and any obstruction is at least 10 times the height of the obstruction.

6.2 Bench system test

Note : Prior to physically mounting the MetPak in its final location, we strongly recommend that a bench system test is carried out to confirm the system is configured correctly, is fully functional and electrically compatible with the selected host system and cabling (preferably utilising the final cable length). The required data format, units, output rate, and other options should also all be set up at this stage.

6.3 Electrical

Cable

Cable type

Generic description – Twisted pairs with drain wire, screened with aluminised tape, with an overall PVC sheath. Wire size 7/0.2mm (24 AWG)

The table shows some suitable manufacturers' references; other manufacturers' equivalents can be used.

Application	No. of pairs	Gill ref.	Belden ref.	Batt electronics ref.
Analogue	4	026-03156	9728	91199
SDI-12	2	-	9729	-

Cable length

The maximum cable length is dependent on the chosen communication.

The table shows the typical maximum lengths at the given baud rates, using the recommended cable. If any problems of data corruption etc are experienced, then a slower baud rate should be used. Alternatively, a thicker or higher specification cable can be tried.

WindSonic Option	Communication format	Baud rate	Max. cable length
Option 3 and 4	Analogue – Voltage o/p	N/A	6.5 m (20 ft)
Option 1 and 2	SDI-12	1200	90m (300ft)

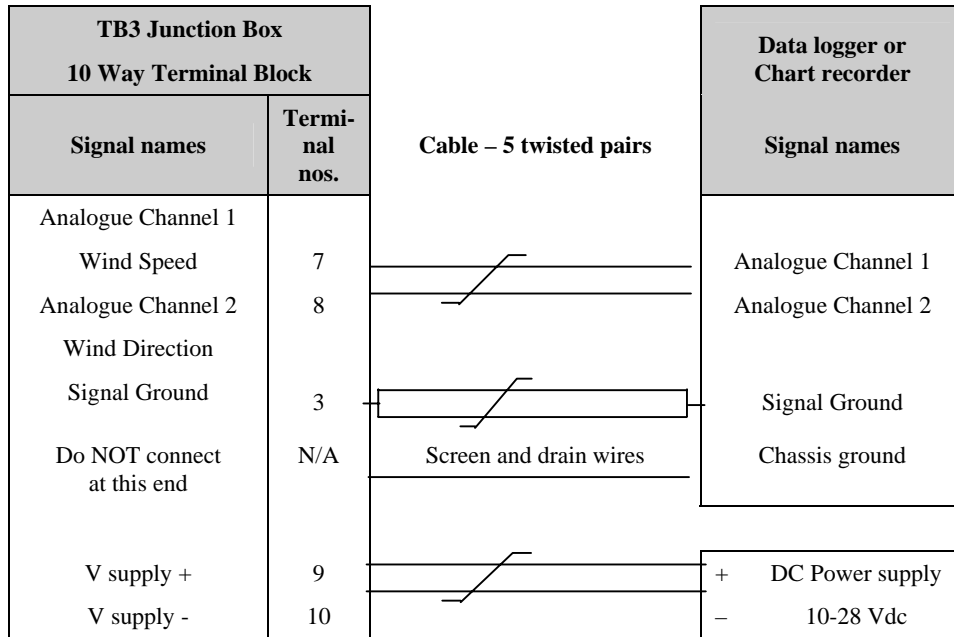
Power supply

The MetPak requires a DC supply of between 9 –16vdc @ 22ma typical if fitted with a Campbell CS215 temperature and relative humidity probe or 10-28vdc @ 28ma typical if fitted with a Rotronic HygroClip S3 probe.

Connecting the Analogue Output (Option 3 and 4)

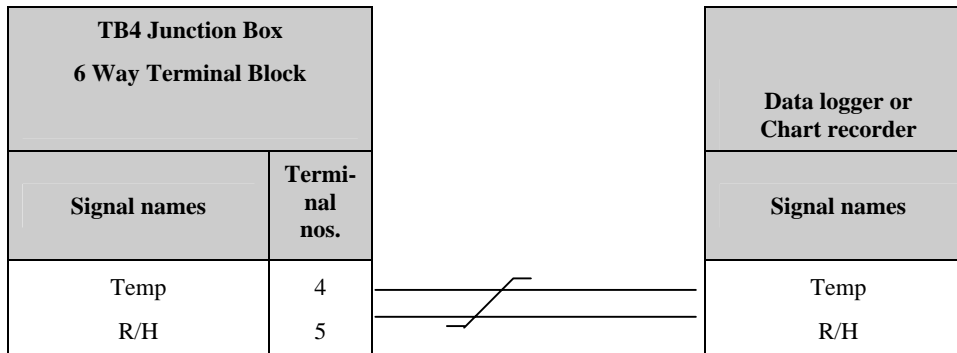
Remove junction box lid.

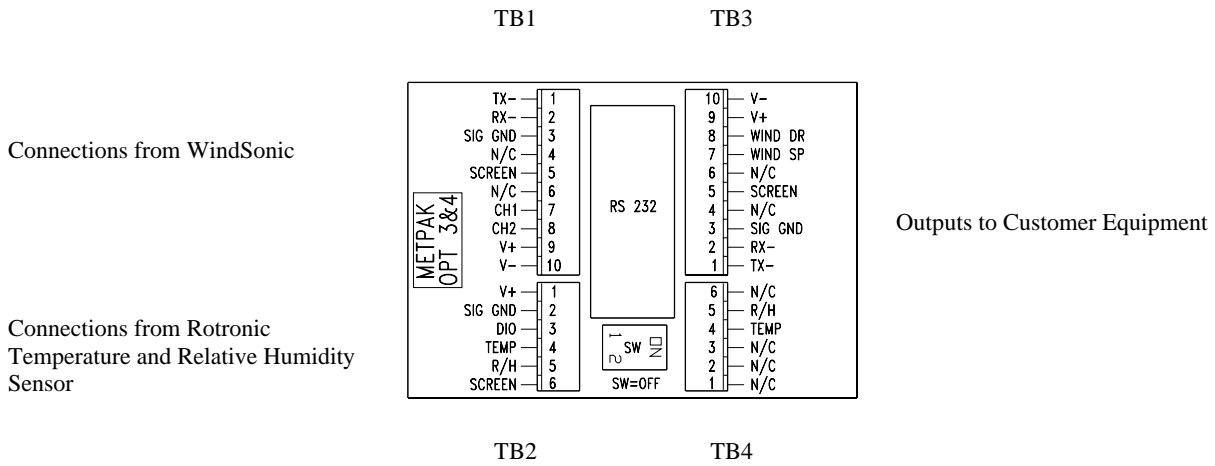
Analogue output wind.



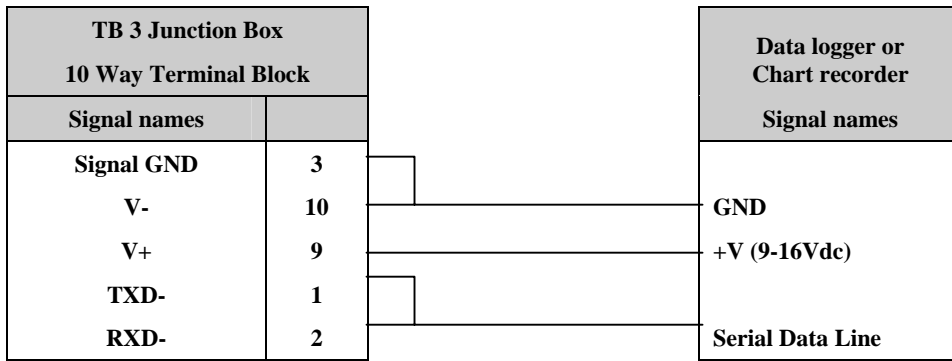
Note: SW1 must be in open position.

Analogue outputs for temperature and relative humidity

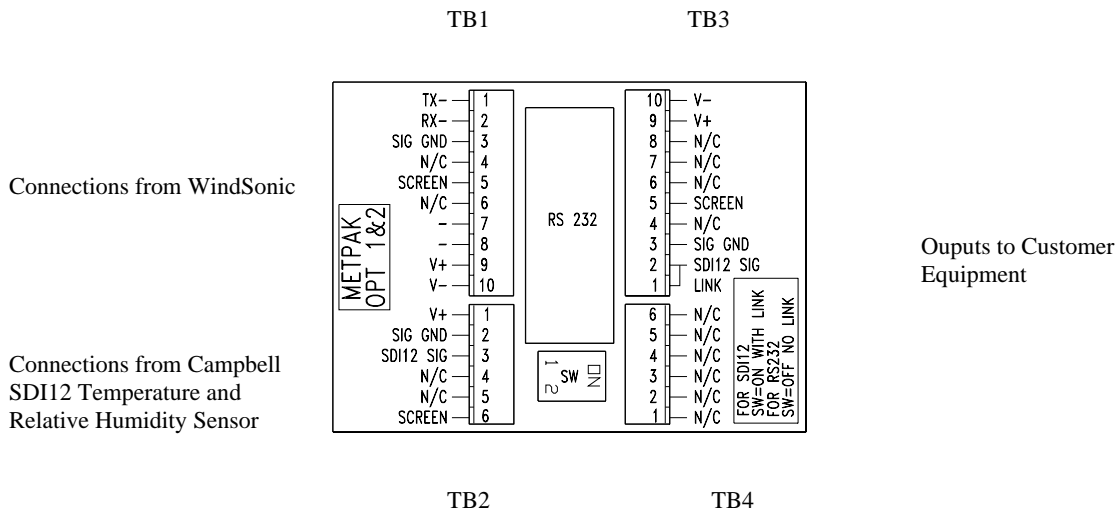




Connecting to an SDI-12 Interface (Option 1 and 2)



Note: SW1 must be in closed position for SDI-12 option. If you wish to use RS232 programming port then SW1 must be in open position and only external links between TXD- and RXD- must be temporarily removed.



Connections to WindSonic cable for MetPak options 5 and 6.

MetPak Option 5 SDI-12

Colour	Function	
Orange	V+	+ 9-16Vdc
Orange/White	V-	
Green	Signal Ground	GND
Blue/White	RX-	
Blue	TX-	Serial Dataline
Drain Wire	Screen	Cable Screen

MetPak Option 6 Analogue

Colour	Function	
Orange	V+	+V (10-28Vdc)
Orange/White	V-	-V
Green	Signal Ground	SIG Ground
Brown	Analogue 1	
Brown/White	Analogue 2	Analogue Voltage Output
Blue	TX-	
Blue/White	RX-	Programming output

7 MECHANICAL

Orientation

Normally the MetPak is mounted on a vertical pole, ensuring a horizontal Measuring Plane.

See Figure 3 Alignment & Mounting details

For indoor use the unit may be mounted with the Measurement Plane set to any required orientation.

Alignment

The MetPak should be aligned to point to North, or any other reference direction –for example, the bow of a boat.

There are two arrows, a coloured rectangle, and an alignment notch to aid alignment.

See Figure 3 Alignment & Mounting Details

Note : It is usually simpler to work first with a compass at ground level and identify a suitable landmark and its bearing.

Mounting

Pass the cable through the pole.

Note: the customer must fit appropriate strain relief to the cable.

It is the responsibility of the customer to ensure that the MetPak is mounted in a position clear of any structure which may obstruct the airflow or induce turbulence.

Do NOT mount the MetPak in close proximity of high powered radar or radio transmitters. A site survey may be required if there is any doubt about the strength of external electrical noise.

Temperature and Humidity Probes should be mounted inside of the Radiation Shield as shown in Fig 3 section 3.3.

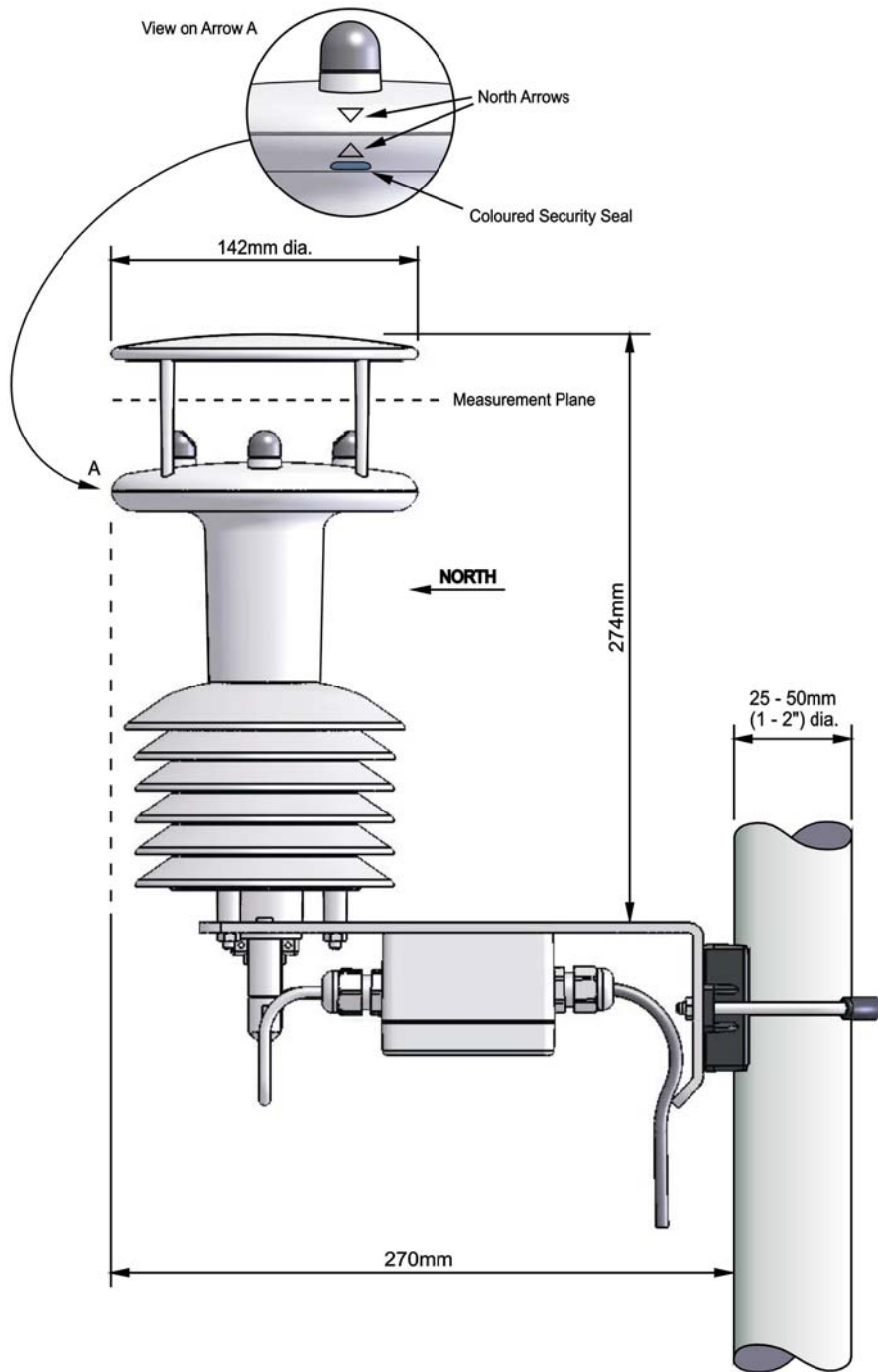


Figure 4 Alignment & Mounting details

8 OUTPUT FORMATS

On applying power to the MetPak, it will provide measurements in one of the following formats:

- SDI-12 (Polled) – See section 10
- Analogue Voltage output see section 9

An RS232 port is located inside of the junction box to enable changes to be made to the factory settings or for fault diagnostics. You will need to connect a PC to the RS232 programming port. You can communicate with the anemometer using the free Gill WindCom software or using Hyperterminal. Instructions for using Hyperterminal are given below.

Configuring Hyperterminal

Note – Other terminal emulators are configured in a very similar way.

1. Decide on an available Com port that you want to use (Usually Com1).
2. Run Hypertrm.exe (Typically accessed via Start →Programs →Accessories →Hyperterminal)
3. Create a New Connection (File → New Connection)
4. Enter a Name (eg WindSonic 1).
5. Change 'Connect Using' to 'Direct to Com 1' (or other Com port as required)
6. Adjust the Port settings to match WindSonic settings. WindSonic default settings are :

Bits per second 9600 **Data bits** 8 **Parity** None
Stop bits 1 **Flow Control (Handshaking)** None

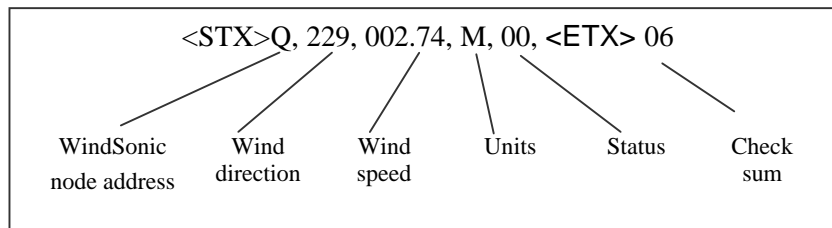
Example of message format:

□ Q, 229, 002.74, M, 00, □ 06

See Section 10 Configuring if you need to change WindSonic settings.

This RS232 programming port will default to Gill – Polar – Continuous. Details are available in section 8.1, this allows changes to the analogue output factory setting.

8.1 Gill format– Polar, Continuous (Default format) available for RS232 programming port.



Where:

<STX>	=	Start of string character (ASCII value 2)
WindSonic node address	=	Unit identifier
Wind direction	=	Wind Direction
Wind speed	=	Wind Speed
Units	=	Units of measure (knots, m/s etc)
Status	=	Anemometer status code (see Section 12.5 for further details)
<ETX>	=	End of string character (ASCII value 3)
Checksum	=	This is the EXCLUSIVE – OR of the bytes between (and not including) the <STX> and <ETX> characters.

WindSonic node address

The default setting is 'Q' do not change this.

Wind direction

Indicated in degrees, from 0 to 359°, with respect to the WindSonic North marker.

In fixed field mode and when the wind speed is below 0.05 metres/sec, the direction will not be calculated, but the last calculated direction above 0.05 m/s will be output.

Wind speed and units

Shows the Wind Speed in the Measurement Plane (*See Figure 3 Alignment & Mounting details*) in one of the following units:

Units	Identifier
Metres per second (default)	M
Knots	N
Miles per hour	P
Kilometres per hour	K
Feet per minute	F

Status

This indicates either

Correct operation Code 00
or Error codes *See Section 12.5 for explanation of codes.*

Checksum

This enables the host system to check that the data has been correctly received. This is the EXCLUSIVE – OR of the bytes between (and not including) the <STX> and <ETX> characters.

Output rate (not displayed)

The WindSonic samples continuously and delivers wind information at 1 (default setting), 2, or 4 outputs / second.

9 ANALOGUE OUTPUTS AND OPTIONS

Note : Analogue outputs are only available from MetPak Option 4 and 6..

Voltage output

The WindSonic in MetPak is default Voltage (0 – 5 V) representing wind speeds between 0-60m/sec.

The HygroClip S3 humidity and temperature sensor applied with MetPak option 3 only has a voltage output. If the customer fit his own temperature and humidity probe with a current output the the mode of the Windsonic output can be changed to suit.

Important :

1. When using the current outputs, the load resistance between the Analogue outputs (TB3-8 and 9) and Signal Ground must be ≤ 250 ohms, including cable resistance.
This is to ensure that the voltage levels do not exceed 5V.
2. The current outputs must be returned to Signal Ground (TB3-3).

Polar and Tunnel modes

If the WindSonic is configured in Gill Polar mode then the analogue outputs will be in Polar mode.

Polar mode direction wraparound

The Wind Direction in Polar mode can be configured for either Standard (0 - 359°) or Wraparound (0 - 539°) options. If the Standard mode is used with a chart recorder, large swings of the recorder pen will be experienced each time the wind direction passes between 0 and 359°. Using the Wraparound mode, when the wind first changes from 0° to 359°, there will be a step change on the output, but after this first time the output will change smoothly each time the wind passes through 360°. (Similarly, the first time the wind veers from 539° to 180°, there will be a step change, after which the output will change smoothly).

Wind direction (degrees)	Voltage output (V)		Current output (mA)	
	Standard	Wraparound	Standard	Wraparound
0	0	0	4.00	4.00
180	2.5	1.67	12.00	9.33
360	5.0	3.33	20.00	14.67
540	n/a	5.0	n/a	20.00

Low wind speeds in polar mode

Whilst the wind speed is below 0.05 metres/sec, the wind direction will not be calculated.

In CSV mode, the Channel 2 output will switch between 0 and 5V (or 4 and 20mA) at the output rate selected.

In fixed field mode, the last valid direction will be output until a new value can be calculated.

Wind Speed scaling

The Wind Speed output can be configured such that full-scale output represents 30, 50 or 60 metres/sec.

In all cases zero Wind Speed is represented by 0V or 4mA.

Tunnel mode

When configured in Tunnel mode, Channel 1 output represents the wind speed along the U axis (South – North) scaled as described above.

Channel 2 gives the direction of the wind along the U axis, where a –U vector (= wind from the N direction) is represented by 0V (or 4mA), and a +U vector is represented by 5V (or 20mA).

Configuring Analogue outputs

WindCom may be used to change the factory default settings to configure WindSonic, alternatively, the user may elect to use another terminal emulator package. This section describes the commands used to change User and Communications settings.

9.1 Entering Configuration mode (see section 8.1 for message format)

From Continuous mode

From Polled mode

***** **<N>**

where <N> is the Unit identifier

The WindSonic responds with a CONFIGURATION MODE message, stops reporting wind measurements, and waits for a command (as detailed below).

9.2 Returning to Measurement mode

Q **ENTER**

The WindSonic responds with wind measurements immediately when in Continuous mode, or on receipt of a Poll signal when in Polled mode.

9.3 Checking the configuration

We recommend that, as a standard procedure, you use this command prior to, and after, changing any settings. It shows the current settings for all the alterable settings.

D **3** **ENTER**

The WindSonic responds with the default settings shown below:

M2, U1, O1, L1, P1, B3, F1, H1, NQ, E1, T1, S3, C2

We suggest you note down the settings, so that you can easily return to them.

Return to measurement mode

Q **ENTER**

All of these settings are explained in the following sections.

9.4 Changing a setting

To change a setting, refer to the sections below, and enter the command of the new setting required, followed by **ENTER**. If successful, the new setting will be sent as a message by the WindSonic.

For example, to change the message format to NMEA, enter **M** **5** **ENTER**

The WindSonic will reply **M5**. When the unit is returned to the Measurement mode, it will be in NMEA format.

Note : The factory-set (default) settings are shown in **bold** in the following sections.

9.5 Power-up Message

Item	Options	Command
Power –up message	ON OFF	H1 H2
<p>If the power up message is On, then a message similar to that below is output, whenever the unit goes into Measurement mode (ie. when power is first applied to the unit, or unit returns to Measurement mode from Configuration mode).</p> <pre> WINDSONIC (Gill Instruments Ltd) FIRMWARE: 2231 - 102 RS232 (CFG) RS 232(Auto) CHECKSUM ROM 9F5E 9F5E *PASS* CHECKSUM FAC 04F4 04F4 *PASS* CHECKSUM ENG 0824 0824 *PASS* CHECKSUM CAL DFBF DFBF *PASS* </pre> <p>If any of these checksums fail, the word PASS will be replaced by FAIL and the unit will use its default settings. If the checksum repeatedly fails after power on – contact your supplier.</p> <p>NOTE: The exact message above will vary.</p>		

9.6 Analogue settings

The following commands are only valid for the MetPak Options 4 and 6

Item	Options	Command
Voltage or Current output	0 - 5 Volt 4 – 20 mA	T1 T2
Analogue range	0 – 30 metres per second 0 – 50 metres per second 0 – 60 metres per second Analogue output disabled	S3 S5 S6 S9
Analogue Wraparound	Wrap around 0 – 539° Normal 0 - 359°	C1 C2

Where:

Analogue range	=	Customer selected range
Analogue wraparound	=	Chart recorder facility
Voltage or current output	=	Output type

Polar mode direction calculation

The system will not calculate a wind direction when the measured velocity falls below 0.05m/s. When configured for fixed field mode the direction output will hold the last setting until a new direction can be calculated. If the unit is in CSV mode, the output will switch between 0 and 5V (or 4 to 20mA) at the output rate selected.

Magnitude scaling

The magnitude output can be scaled such that the full scale output represents either 30, 50 or 60ms⁻¹.

Error conditions

If a valid wind measurement cannot be calculated (for example all paths blocked), the outputs 1 and 2 will switch between 0 and 5V (or 4 to 20mA) at the output rate selected.

Disabled outputs

If the analogue outputs are not required, they can be disabled (Command S9).

9.7 Configuration / Diagnostic Information

Each of these commands causes a response from the WindSonic.

Item	Command	Response
Type and serial No.	D1	TYPE: Y SERIAL NO.: 012345
Software version	D2	FIRMWARE: 2231-102
Unit configuration	D3	M2,U1,O1,L1,P1,B3,F1,H1,NA,E3,
Analogue ID (if present)	D4	EXP MOD ID: 0 D4 = 0 (No Analogue outputs) D4 = 1 (Analogue outputs enabled)
Self test	D6	<i>See Section 0</i> 12.2 <i>Self-Test</i> (Still Air)

10 METPAK SDI-12

WindSonic – Refer to SDI-12 Commands & Message Format

CS215 – Refer to Campbell Scientific User Guide

It is only possible to use SDI-12 commands to program the wind, temperature and humidity sensors. Typical output for wind data is shown in Gill output message format.

WindSonic default mode identity. 0

CS215 default mode identity. 1 (Note Campbell probe factory default is normally set to 0, to avoid conflict default has been set to 1, this applies to configurations preset by Gill and also by customers who fit their own Campbell probe.)

10.1 SDI-12 COMMANDS

SDI-12 configured units comply with SDI-12 Interface Standard V1.3

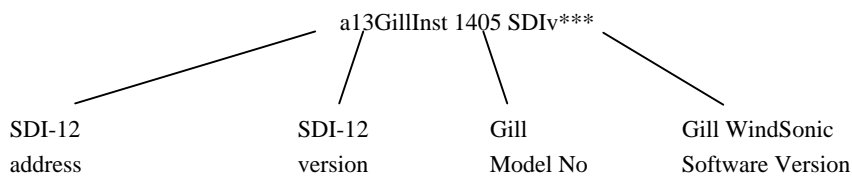
We advise that you download the full SDI-12 specification from www.sdi-12.org

All other commands not defined below respond with a 'zero data values ready' response.

All units of measurement are in metres per second. This cannot be re-scaled.

Name	Command	Gill Output
Continuous Measurement (Polar)	aR0!	a<dir><mag><status><CR><LF>
Continuous Measurement (UV)	aR1!	a<U><V><status><CR><LF>
Continuous Measurement with CRC (Polar)	aRC0!	a<dir><mag><status><CRC><CR><LF>
Continuous Measurement with CRC (UV)	aRC1!	a<U><V><status><CRC><CR><LF>
Start Measurement (Polar)	aM!	a0003
Send Data	aD0!	a<dir><mag><status><CR><LF>
Start Measurement (UV)	aM1!	a0003
Send Data	aD0!	a<U><V><status><CR><LF>
Start Measurement with CRC (Polar)	aMC!	a0003
Send Data	aD0!	a<dir><mag><status><CRC><CR><LF>
Start Measurement with CRC (UV)	aMC1!	a0003
Send Data	aD0!	a<U><V><status><CRC><CR><LF>
Acknowledge Active	a!	a<CR><LF>
Send Identification	aI!	a13GillInst 1405 SDI v101 <sn><CR><LF>
Change Address	aAb!	b<CR><LF>
Address Query	?!	a<CR><LF>
Measurement on demand	aXLPM!	0LP<CR><LF>
Continuous Reading	aXHPM!	0HP<CR><LF>
Default operating mode aXHPM!		

Gill Output Message Format



*** Software Version may change

11 MAINTENANCE & FAULT-FINDING

11.1 Cleaning

If there is any build up of deposit on the unit, it should be gently cleaned with a cloth moistened with soft detergent. Solvents should not be used, and care should be taken to avoid scratching any surfaces. The unit must be allowed to defrost naturally after being exposed to snow or icy conditions, do NOT attempt to remove ice or snow with a tool.

Do NOT remove black “rubber” transducer caps.

11.2 Servicing

There are no moving parts or user-serviceable parts requiring routine maintenance in the WindSonic wind sensor fitted to MetPak.

Opening the WindSonic unit or breaking the security seal will void the warranty and the calibration.

In the event of failure, prior to returning the unit to your authorised Gill distributor, it is recommended that :

1. All cables and connectors are checked for continuity, bad contacts, corrosion etc.
2. A bench test is carried out as described in Section 12.1.
3. You contact your supplier for advice

For future service or maintenance of the temperature and humidity sensors please refer to appendix 13.5 or 13.6 of this manual.

11.3 Fault-finding

Applicable to WindSonic only.

Symptom	Solution
No output	<p>Check DC power to WindSonic, cable and connections.</p> <p>Check comms settings of WindSonic (<i>as detailed in Section 10</i>) and host system match, including correct Com port</p> <p>Check unit is in Continuous mode</p> <p>Check that in-line communication devices are wired correctly.</p> <p>NOTE: It is usual for Anemometer TX + to be connected to converter device RX +</p>
Corrupted output	<p>Check comms settings of WindSonic and host system match.</p> <p>Try a slower baud rate.</p> <p>Check cable lengths and type of cable.</p>
One way communication	<p>Check WindSonic and host system are both set to the same protocol RS232, RS422, or RS485.</p> <p>Check wiring is in accordance with the manual.</p>
Failed / Incorrect WindSonic output, data invalid flag	<p>Check that transducer path is not blocked</p>

11.4 Returning unit

If the unit has to be returned, it should be carefully packed in the original packaging and returned to your authorised Gill distributor, with a full description of the fault condition.

11.5 Status (error) codes

The Status code is sent as part of each wind measurement message. These can be observed on the RS232 programming port inside of the junction box.

Code	Status	Condition
00	OK	Sufficient samples in average period
01	Axis 1 failed	Insufficient samples in average period on U axis
02	Axis 2 failed	Insufficient samples in average period on V axis
04	Axis 1 and 2 failed	Insufficient samples in average period on both axes
08	NVM error	NVM checksum failed
09	ROM error	ROM checksum failed
10	System gain at maximum	Wind velocity reported could be in error
A	-	NMEA data valid
V	-	NMEA data invalid

12 TESTS

12.1 Bench test

1. Couple the MatPak to the host system and power supply, using a known working test cable.
2. Check that the unit is correctly configured by going into Configuration mode and using **D3** See Section 9.3 *Checking the configuration.*
3. Check for normal output data, and that the Status Code is OK – 00
4. If the status code is other than 00, refer to Section 11.5 Status (error) codes.
5. Use an office fan or similar to check that the unit is sensing wind, turning the unit to simulate changing wind direction and to check that both axes are functioning. The fan will also give output changes from the temperature and relative humidity sensor.
6. Note that this a quick functional test.
7. Use the office fan to check the temperature and humidity sensor output.

12.2 Self-Test (Still Air) for WindSonic wind sensor.

This test checks Alignment, Gain, Checksums and can be performed from the RS232 port inside of the junction box.

Alignment tests : The unit performs a transducer geometry check and compares the result with its factory setting.

Gain tests : The unit performs a check of its operating gain against its factory setting.

Checksum tests : The unit performs a check of its program and data memory.

Important This test is a stringent laboratory test which will only be passed if carried out under still air conditions at room temperature (17-23°C). NOTE: Option 4 SDI-12 units must be in Gill mode for the self test to function (see Section 11).

1. Place a cardboard box over the WindSonic sensor.
2. Go into Configuration Mode ***** **ENTER** .
3. Carry out the Self-test by entering **D** **6** **ENTER** .

A message similar to that shown below will be generated :

```
ALIGNMENT LIMITS:0D59,0CF5
ALIGNMENT U:OD15 *PASS*
ALIGNMENT V:OD16 *PASS*
GAIN 0:0001 *PASS*
GAIN 1:0001 *PASS*
GAIN 2:0001 *PASS*
GAIN 3:0001 *PASS*
CHECKSUM ROM:AB7D AB7D *PASS*
CHECKSUM FAC:04F4 04F4 *PASS*
CHECKSUM ENG:082A 082A *PASS*
CHECKSUM CAL:A9C1 A9C1 *PASS*
```

For each of the Alignment and Gain tests a Pass or Refer to Manual message is generated.

For each of the Checksum tests a Pass or Fail message is generated.

4. If any of the tests fail, contact your supplier.
If a “refer to manual” message appears please see Section 12.3 Fault Finding.
Note that it will only pass if the specified temperature and zero wind conditions are met.
Check that there are no visible obstructions or damage to the unit before contacting Gill or your authorised distributor for further advice.

12.3 Calibration

A Custom calibration of the wind sensor is available from Gill Instruments. This must be specified at the time of order or the unit must be returned to Gill Instruments for retrospective calibration. Calibration of the temperature and humidity probe should be out in accordance with section 13.5 or 13.6.

13 APPENDICES

13.1 Glossary & Abbreviations

Item	Meaning
CAL	Calibration
CR	Carriage Return
CSV	Comma Separated Variable
ENG	Engineering
FAC	Factory
KPH	Kilometres per Hour
LF	Line Feed
MPH	Miles per Hour
NMEA 0183 (version 3)	National Marine Electronics Association standard for interfacing marine electronic navigational devices
NVM	Non-Volatile Memory
PC	IBM compatible Personal Computer
ROM	Read Only Memory
RS232	Communications standard
RS422	Communications standard
RS485	Communications standard
RXD	Received Data
TXD	Transmitted Data
SDI-12	Serial – Data Interface standard for microprocessor based sensors
WMO	World Meteorological Organisation

13.2 Guarantee

For terms of guarantee contact your supplier.

Warranty is void if the coloured security seal is damaged or broken, or the transducer caps have been damaged.

13.3 Electrical Conformity

**EC DECLARATION OF CONFORMITY
ACCORDING TO COUNCIL DIRECTIVE
89/336/EEC**



We, Gill Instruments Ltd., declare under our sole responsibility that the products :

WindSonic Ultrasonic Anemometer

Manufactured by : Gill Instruments Ltd

to which this declaration relates, are in conformity with the protection requirements of Council Directive 89/336/EEC on the approximation of the laws relating to electromagnetic compatibility.

This Declaration of Conformity is based upon compliance of the product with the following harmonised standards:

Emissions EN61000 - 6 -3

Immunity EN61000 - 6 -2 *

* Excluding 150kHz to 250kHz Conducted Immunity

Signed by:

A handwritten signature in black ink that reads "A.C.R. Stickland".

A.C.R. Stickland – Director

Date of issue: 30/5/2003

Place of issue: Gill Instruments Ltd
Saltmarsh Park, 67 Gosport Street,
Lymington, SO41 9EG, UK



13.4 Model 41003 Multiplate Radiation Shield Manual



MODEL 41003 MULTI-PLATE RADIATION SHIELD

INSTRUCTION SHEET 41003-90
REV01-03

INTRODUCTION

The Multi-Plate Radiation Shield protects temperature and relative humidity sensors from error-producing solar radiation and precipitation. This shield relies on a combination of plate geometry, material and natural ventilation to provide effective shielding.

INSTALLATION

The Multi-Plate Radiation Shield is designed to be mounted on a relatively flat open area. For best performance, the shield should be placed in a location with the following characteristics:

- Good air circulation around shield.
- Away from large masses (asphalt, masts, solar panels) especially metal items.
- Away from building exhaust vents, electrical machinery and motors.
- Away from standing water, water fountains and sprinklers.

MAINTENANCE

The Multi-Plate Radiation Shield requires no regular maintenance in normal use. Dirt or dust accumulation on the plates and bracket can be cleaned with soap and water. **Do not use solvents.**

SPECIFICATIONS

Sensor Mounting:

Model 41003 includes universal adapter for sensors to 12.5mm diameter.

Model 41003P includes custom sensor adapter that can be machined for sensors to 26mm diameter.

Radiation Error: 1080 W/m² intensity

0.4°C (0.7°F) RMS @ 3 m/s (6.7 mph)

0.7°C (1.3°F) RMS @ 2 m/s (4.5 mph)

1.5°C (2.7°F) RMS @ 1 m/s (2.2 mph)

Construction:

UV stabilized white thermoplastic plates.

Aluminum mounting bracket, white

Stainless steel U-bolt mounting clamp.

Dimensions:

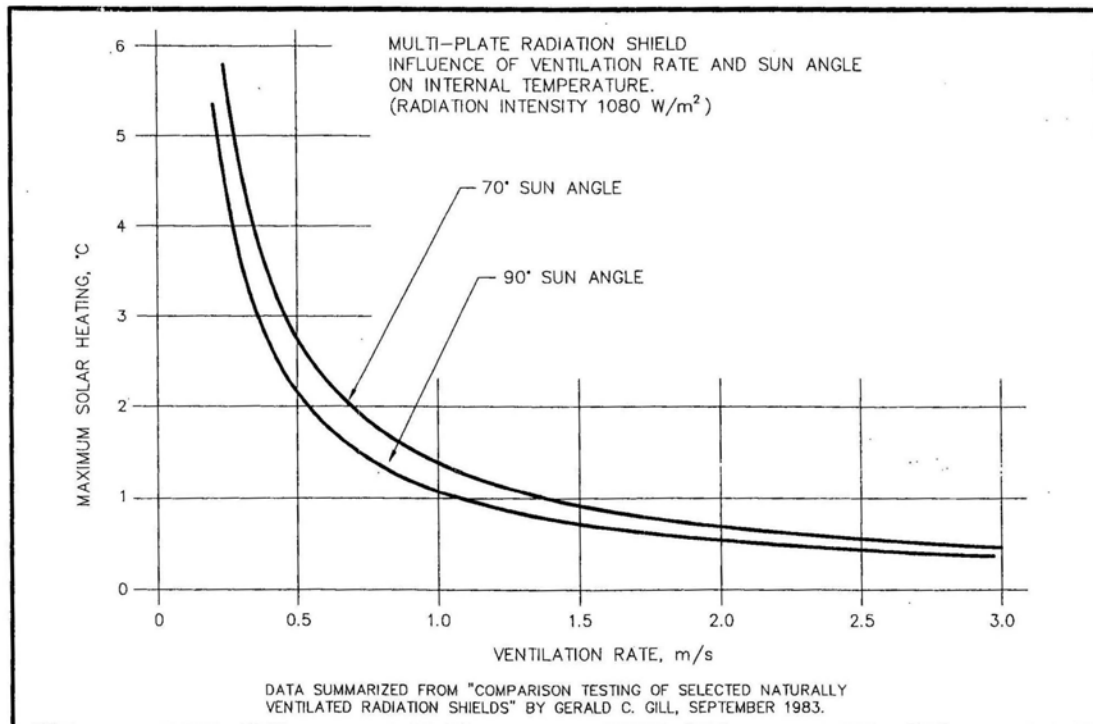
12 cm (4.7 in) D x 27 cm (10.6 in) H

Mounting fits vertical pipe 25-50 mm (1-2 in) diameter

Weight:

Net wt 0.7 kg (1.6 lb)

Ship wt 1.4 kg (3.2 lb)



R. M. YOUNG COMPANY 2801 Aero-Park Drive, Traverse City, Michigan 49686 U.S.A.
TEL (231) 946-3980 FAX (231) 946-4772 E-mail: Met.sales@youngusa.com

REFERENCES: MULTI-PLATE RADIATION SHIELD

References containing additional information about development and applications of the Multi-Plate Radiation Shield are listed below in chronological order:

Gill, G.C., "Development of a Small Rugged Radiation Shield for Air Temperature Measurements on Drifting Buoys", Report to NOAA Data Buoy Office for Development Contract #01 -7-038-827 (IF) 1979, 23 pp, 17 figs.

Gill, G.C., "Comparison Testing of Selected Naturally Ventilated Solar Radiation Shields", Report to NOAA Data Buoy Office for Development Contract #NA-82-OA-A-266, 1983, 15 pp., 15 figs.

Gammill, B., "Temperature Sensor Shield Comparison" Internal Test Report, Physical Science Laboratory, New Mexico State University, 1985.

Payne, R.E., "Air Temperature Shield Tests", WHOI-87-40, Woods Hole Oceanographic Institution, 1987, 22 pp.

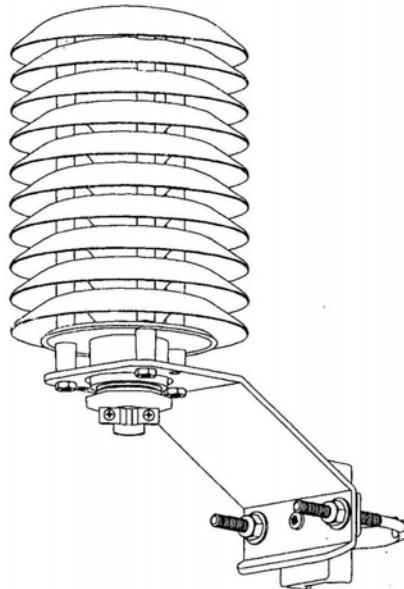
Payne, R.E., "The MR: A Meteorological Data Sensing, Recording and Telemetry Package for Use on Moored Buoys", Journal of Atmospheric and Oceanic Technology, Vol. 5, No. 2, 1988, pp. 286-297.

Crescenti, G.H., Payne, R.E., and Weller, R.A., "Improved Meteorological Measurements from Buoys and Ships (I MET): Preliminary Comparison of Solar Radiation Air Temperature Shields", WHOI.-89-46/IMET TR-89-03, Woods Hole Oceanographic Institution, 1989, 53 pp.

Weller, R.A., and Hosom, D.S. "Improved Meteorological Measurements from Buoys and Ships for the World Ocean Circulation Experiment", Proceedings Oceans '89, Seattle, IEEE, 1989, pp. 1410-1415.

Fougere, A.J., Brown, N.L., and Hobart, E., "Digital Output Temperature Sensing Module for Oceanographic & Atmospheric Measurements", Proceedings Marine Instrumentation '90, San Diego, Marine Technology Society, 1990, pp. 46-51.

Anderson, T., and Mattison, I., "A Field Test of Thermometer Screens", Report 900426, Swedish Meteorological and Hydrological Institute, 1990, 15 pp., 19 figs.



13.5 Rotronic HygroClip S3 manual

ROTRONIC HYGROCLIP®

Mit dem ROTRONIC HygroClip haben Sie ein Produkt erworben, das nach ISO 9001 gebaut und nach EN50082-2 EMV verträglich ist. Bei Beachtung der unten aufgeführten Montage- und Bedienungshinweise funktioniert der HygroClip über Jahre hinweg perfekt. Diese Anleitung gilt für folgende Fühler-Typen:

HygroClip -S/S3, -C/C3, -R/R3, -SC04/05, -SP05, -HP28, -HS28, -HK25, HK40

Technische Daten:

Einsatzbereich Feuchte: 0...100 %rF (alle Typen)
Einsatzbereich Temperatur: je nach Fühlertyp

Messbereich:

Feuchte: 0...100 %rF
Temperatur: je nach Fühlertyp

Ausgänge:

-40...85 °C = -0.4...0.85 V
-40...60 °C = 0...1 V

One Wire DIO

1. Messwert nach
Messintervall:

Versorgung:

Genauigkeit bei 23 °C:

Ausgangsbürde:

Schutzart:

Fühler-Typ

S, C, R, SC04, SC05, SP05, HP28, HS28
S3, C3, R3

Alle Typen

2,3 s
0,7 s

3,5...24 VDC / ca. 3mA

± 1,5 %rF / ± 0,3 K Pt100 1/3 DIN

> 10 kOhm

IP65 (ausser Sensor / Filterbereich)

Hinweis: Wählen Sie die Versorgungsspannung immer so klein wie möglich!

Montage: (alle steckbaren HygroClip Typen mit DAT05 Stecker passend zu Handgeräten und MOK Adaptern.)



Warnung:

Die HygroClip Fühler sind steckbar. Sie dürfen unter keinen Umständen verdreht werden. Das Verdrehen der Stecker zerstört Fühler und Gegenstecker und führt zu Garantieverlust!

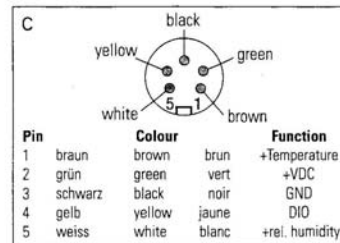
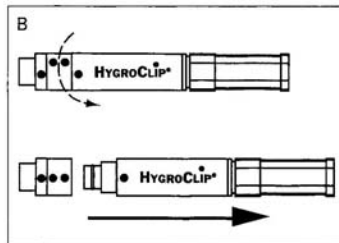
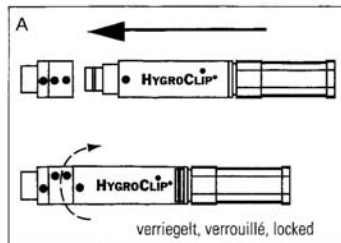
Die 4 Markierungspunkte des HygroClip nach Zeichnung A ausrichten. Den Fühler mit leichtem achsialem Druck in die Aussparungen des Sicherungsringes stecken. Danach **nur den Sicherungsring im Uhrzeigersinn drehen.**

Entfernen des HygroClip (Zeichnung B) durch Drehen des Sicherungsringes im Gegenuhrzeigersinn bis zum Anschlag; dann HygroClip abziehen. Das Montagestück MOC wird mit der mitgelieferten Mutter befestigt. Bohrdurchmesser 12.5 mm. (Nur HygroClip C und C3)

Elektrischer Anschluss nach Zeichnung C.

Justierung / Kalibrierung

Die HygroClip Fühler sind ab Werk justiert. Wir empfehlen je nach Einsatz eine Kalibrierung nach ca. einem Jahr. Dies kann vor Ort mit ROTRONIC SCS Feuchte-Standards durch Sie erfolgen. Die Handhabung entnehmen Sie der den Feuchte-Standards beiliegenden Anleitung. Betreffend Justierung kontaktieren Sie ROTRONIC oder unsere Vertretung.



rotronic®

messgeräte gmbh

www.rotronic.de

Einsteinstrasse 17-23, D-76275 Ettlingen
Telefon +49 7243 383 250, Fax +49 7243-383 260

rotronic®

Instruments uk ltd

www.rotronic.co.uk

Unit 1A Crompton Fields, Manor Royal,
Crawley, West Sussex RH10 9EE
Phone +44 1293-57 10 00, Fax +44 1293-57 10 08

rotronic ag

TECHNIK FÜR PROFIS

www.rotronic.com

Grindelstrasse 6, CH-8303 Bassersdorf,
Telefon +41 44 838 11 11, Fax +41 44 837 00 73

rotronic®

sarl

www.rotronic.fr

56, Bld.de Courcerin, F-77183 Croissy Beaubourg
Tél. +33 1 60 95 07 10, Fax +33 1 60 17 12 56

rotronic®

instrument corp

www.rotronic-usa.com

160, East Main Street, Huntington N.Y. 11743 USA
Phone +1 631 427 38 98, Fax +1 631 427 39 02

12.0655.0007

13.6 Campbell CS215 Temperature and Humidity PROBE manual

CS215 Temperature and Relative Humidity Probe

User Guide

Issued 8.6.06

Copyright © 2004 Campbell Scientific Ltd.

Guarantee

This equipment is guaranteed against defects in materials and workmanship. This guarantee applies for twelve months from date of delivery. We will repair or replace products which prove to be defective during the guarantee period provided they are returned to us prepaid. The guarantee will not apply to:

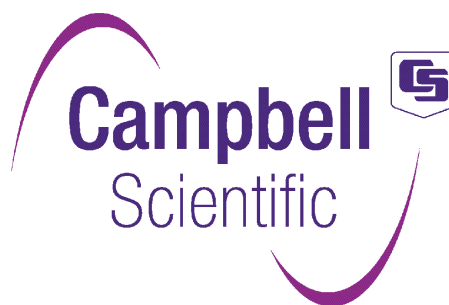
- Equipment which has been modified or altered in any way without the written permission of Campbell Scientific
- Batteries
- Any product which has been subjected to misuse, neglect, acts of God or damage in transit.

Campbell Scientific will return guaranteed equipment by surface carrier prepaid. Campbell Scientific will not reimburse the claimant for costs incurred in removing and/or reinstalling equipment. This guarantee and the Company's obligation thereunder is in lieu of all other guarantees, expressed or implied, including those of suitability and fitness for a particular purpose. Campbell Scientific is not liable for consequential damage.

Please inform us before returning equipment and obtain a Repair Reference Number whether the repair is under guarantee or not. Please state the faults as clearly as possible, and if the product is out of the guarantee period it should be accompanied by a purchase order. Quotations for repairs can be given on request.

When returning equipment, the Repair Reference Number must be clearly marked on the outside of the package.

Note that goods sent air freight are subject to Customs clearance fees which Campbell Scientific will charge to customers. In many cases, these charges are greater than the cost of the repair.



Campbell Scientific Ltd,
Campbell Park, 80 Hathern Road,
Shepshed, Loughborough, LE12 9GX, UK
Tel: +44 (0) 1509 601141
Fax: +44 (0) 1509 601091

Email: support@campbellsci.co.uk
www.campbellsci.co.uk

Contents

1. Introduction	1
2. Specifications	1
3. Installation	2
4. Wiring	3
4.1 Long Cables	3
4.2 Power Conservation	4
5. Reading the Sensor	4
5.1 Measurements at Slow Scan Rates	5
5.1.1 Example Program for CR10X Measuring Two Sensors Every Minute ...	5
5.1.2 Example CRBasic Program Measuring One Sensor Every 30 Seconds ..	7
5.2 Measurements at Fast Scan Rates	7
5.2.1 Edlog Dataloggers	7
5.2.2 CRBasic Dataloggers	8
6. Changing the SDI-12 Address Using LoggerNet and a Datalogger	9
6.1 Array-Based “Edlog” Dataloggers	9
6.2 Table-Based “Edlog” Dataloggers	10
6.3 CR200 Series Datalogger	12
6.4 CR1000 Datalogger	13
7. Maintenance and Calibration	13
7.1 Sensor Element Replacement	13
Appendix A. Environmental Performance	A-1
A.1 Tests to Defined Standards	A-1
A.2 Exposure to Pollutants	A-1
A.3 Operating Range of RH Element	A-1
Appendix B. Sensor Element Calibration	B-1

Figures

1. Screen Capture of SDI-12 Transparent Mode on Edlog Array-Based Datalogger (CR10X) using Control Port 8 and Changing SDI-12 Address from 0 to 1	10
2. Screen Capture of SDI-12 Transparent Mode on Edlog Table Based Datalogger using Control Port 8 and Changing SDI-12 Address from 0 to 1	11
3. Screen Capture of SDI-12 Transparent Mode on CRBasic CR200 Series Datalogger using Control Port C1/SDI12 and Changing SDI-12 Address from 0 to 1.....	12
4a. Correct Fitment of Sensor Element (Side View)	15
4b. Incorrect Fitment of Sensor Element (Side View).....	15
A-1 Normal Operating Conditions of RH Element	A-2

Tables

1. Cable Connections.....	3
A-1 Environmental Tests.....	A-1

CS215 Temperature and Relative Humidity Probe

The CS215 Temperature and Relative Humidity probe is designed as a reasonably priced probe for general meteorological and other datalogging applications. It utilises the SDI-12 communications protocol to communicate with any SDI-12 recorder simplifying installation and programming.

1. Introduction

The CS215 probe utilises a novel single chip element that incorporates both a temperature and RH sensor. Each element is individually calibrated with the calibration corrections stored on the chip. The element is easily changed in the field. Replacement of the element effectively fully recalibrates the probe both for temperature and humidity thus minimising downtime and calibration costs.

Low power electronics within the CS215 controls the measurement made by the sensor element, applies temperature and linearization corrections to the readings and presents the data via an SDI-12 compatible interface to a datalogger.

The probe is fitted with a custom-made, yet low-cost sintered plastic filter to minimise the effects of dust and dirt on the sensor. The filter is lightweight and hydrophobic thereby minimising the effect of the time response of the sensor.

The probe housing is designed to withstand permanent exposure to all weathers and to fit into a range of radiation shields including lower cost compact shields

2. Specifications

Sensing Element: Sensirion SHT75

Temperature Measurement:

Operating Range: -40°C to +70°C

Accuracy: $\pm 0.3^\circ\text{C}$ at 25°C, $\pm 0.4^\circ\text{C}$ over +5°C to +40°C, $\pm 0.9^\circ\text{C}$ over -40°C to +70°C

Response Time With Filter: 120 s (63% response time in air moving at 1 m/s)

Default units: Degrees celsius

Relative Humidity:

Operating Range: 0 to 100% RH (-20 to +60°C; see Appendix A)

Accuracy (at 25°C): $\pm 2\%$ over 10-90% , $\pm 4\%$ over 0-100%

Short Term Hysteresis: <1% RH

Temperature Dependence: Compensated to better than $\pm 2\%$ over -20 to 60°C

Typical Long-Term Stability: Better than $\pm 1.0\%$ per year

Response Time with Filter:	<15s (63% response time in air moving at 1 m/s at humidities <85%)
Environmental Performance:	See Appendix A
Calibration Traceability:	See Appendix B
Supply Voltage:	6-16V DC
Current Consumption:	Typically 120µA quiescent, 1.7mA during measurement (takes 0.7 sec)
Diameter:	12mm at sensor tip, maximum 18mm at cable end
Length:	180mm, including cable strain relief
Housing Material:	Anodised aluminium
Filter Material:	Sintered high density polyethylene, average pore size 10-13 µm
Standard Cable Length:	3 metres
EMC Compliance:	Tested and conforms to IEC61326

3. Installation

The CS215 is normally housed inside a model 41303-5 Solar Radiation Shield when used in the field.

To fit the CS215 in the Radiation Shield:

1. Loosen the plastic split collar at the base of the shield (reversing the removable portion if necessary) and gently insert the probe.
2. Tighten the collar until it lightly grips the probe body.
3. Continue to push the probe up into the body of the shield until the step in the tube stops it going any further.
4. Tighten the collar until it securely grips the probe.
5. Loop the cable up and fix it to the underside of the radiation shield arm or to the mounting tower using a cable tie.

CAUTION: Failure to secure the cable can lead to breakage of the wires due to fatigue if the cable is allowed to blow to and fro in the wind.

The probe will also fit into the larger shields designed to take the HMP45C probe, e.g. the URS1 or 41003 shields. The 41003 shield requires either the 18.5 or 12 mm adaptors (parts 41046 DS-18 and 41046 DS-12 respectively). For those shields tighten the sensor grip around the probe where it best matches the size of the grip. (The probe will also fit directly into most of the R M Young shields, where the probe enters the shield from the top, pointing downwards.)

CAUTION: When removing the probe from the shield withdraw it from shield carefully, as the foam filter is easily broken if bent or knocked.

For other applications the CS215 can be installed in any orientation. Install it away from obvious sources of heat, including solar radiation.

NOTE: It is best to protect the filter at the top of the sensor from direct exposure to liquid water as whilst the hydrophobic nature of the filter will repel light rain, driving rain can force itself into the pore structure of the filter and then take some time to dry out.

4. Wiring

The CS215 can be used with all Campbell Scientific and most other dataloggers that support the SDI-12 protocol. Wiring colours and connections between the sensor and a datalogger are shown in Table 1.

Cable	Description	Connection to Datalogger
Red	12V	supply 12V
White & Black	Power ground	G
Green	SDI-12 signal	Control port or dedicated SDI-12 port (CR5000)
Screen	Power ground	G

To use more than one probe per datalogger, you can either connect the different probes to different SDI-12 compatible ports on the datalogger or change the SDI-12 addresses of the probes and let them share the same connection. Using the SDI-12 address minimizes the use of ports on the datalogger and also allows probes to be connected in a “daisy-chain” fashion which can minimize cable runs in some applications. (However, see below for limits on the total cable length.)

There are two ways to set the SDI-12 address of the CS215:

- By sending the required commands to the sensors via an SDI-12 recorder/datalogger that allows talk through to the sensor.
- By loading a program into the recorder that sends the required commands – see section 6 below.

4.1 Long Cables

As the measurement data is transferred between the probe and datalogger digitally there are no offset errors incurred with increasing cable length as seen with analogue sensors. However, with increasing cable length there is still a point when the digital communications will break down, resulting in either no response from the sensor or corrupted readings. The original SDI-12 standard specifies the maximum total cable length for the cable as being 200 feet (61 metres). In practice even longer cables than this can be used, but to ensure proper operation with long cables follow these guidelines:

- Use low capacitance, low resistance, screened cable (as fitted by Campbell Scientific). With such cable, distances of several hundred metres to the sensor are possible.
- Ensure that the power ground cable has low resistance and is connected to the same ground reference as the datalogger control ports.
- Be aware that “daisy chaining” sensors reduces the maximum cable length roughly in proportion to the number of sensors connected in parallel.

- If long cabling or interference appear to be causing spurious readings then use the `checksummed` versions of the SDI-12 instructions (see section 5).

4.2 Power Conservation

The CS215 draws about 120 μ A of current between measurements from its 12V supply. When used with the aR! command the average consumption increases by ~50 μ A over the quiescent as the sensor automatically takes a measurement every 10 seconds. In most applications these levels of current consumption are insignificant compared to the datalogger and other power uses so the sensor can be permanently connected.

In very low power applications battery power can be conserved by turning the 12V supply to the CS215 on just before the measurement (allowing a 'warm-up' time of at least 100 ms) and then turning it off afterwards.

This switching can be achieved in different ways depending on the type and model of your datalogger. If available the switched 12V output of the datalogger can be used or a small power switch or solid state relay such as the PSW12.

5. Reading the Sensor

The CS215 output is measured using a standard SDI-12 instruction to read the data from an SDI-12 sensor. For Campbell Scientific Edlog dataloggers, instruction 105 is used. For CRBasic dataloggers the SDI12Recorder instruction is used. If using the sensor with other SDI-12 recorders please refer to your system's documentation. Further details of the SDI-12 commands can be found on this Web site: www.sdi-12.org.

The CS215 complies with a subset of the SDI-12 1.3 instruction set. Specifically it supports these SDI-12 commands:

- aM!, initiate measurement (and the subsequent aD0! "get data" command which is automatically sent by a Campbell Scientific datalogger)
- aC!, initiate concurrent measurement, where the datalogger gets the data some time later using the aD0! Command (see the datalogger manual for a more detailed explanation)
- aI!, send identification
- aAb!, change address to b
- ?! query the address of one sensor

CS215 sensors with serial numbers after E1587 also support these additional SDI-12 commands. (Older sensors can be upgraded to do this but as they need to be returned to the factory for an upgrade this is not normally economic.)

- aR! (or aR0!), continuous measurements where the sensor will start to make measurements every 11 seconds automatically and return the most recent value, without delaying its response to make the measurement (see note below). This instruction usually takes less than 300 milliseconds to execute.

NOTE: The sensor will automatically switch to making measurements every 11 seconds (+/-2 second) the first time it receives the aR! command. It makes the measurements based on its own clock which is not synchronised to the datalogger clock. This means measurements made with the aR! command can be up to 11 seconds old. This is not normally an issue for environmental measurements due to slow rate of change of RH and temperature. If measurements are requested more frequently than every 11 seconds the aR! option will return repeated values, up until the point the sensor takes its next measurement. If measurements are requested at 2 sec or faster the sensor will increase its measurement rate to approximately every 5 seconds. The automatic measurement mode can only be cancelled by powering down the sensor to reset it.

- aMC!, aCC!, aRC!, which are the same as the instructions above but where the C at the end of the instruction forces a validation for the data received from the sensor using a checksum. If the checksum is invalid the logger will re-request the data up to three times. The checksum validation increases the measurement time by about 40 milliseconds if there are no errors. Retries will increase the measurement time in proportion to the number of retries. Use of the checksum option is only normally necessary for very long cable runs.

Where in all cases “a” is the address of the sensor and “!” is the command terminator. These two characters are normally sent implicitly by Campbell Scientific dataloggers.

5.1 Measurements at Slow Scan Rates

If the scan interval of your measurement sequence is very long (ten seconds or more) use the aM! command to read the data from the sensor in the main table (or scan for CRBasic) as this minimises power consumption. If the scan rate has to be faster please use the aR! command or refer to section 5.2 below.

With Campbell Scientific dataloggers the aM! command involves just one program instruction. The datalogger sends the command, waits and then automatically sends the ‘aD0!’ get data command and collects the measurements from the sensor. The sensor returns two values for all measurement instructions – the temperature in degrees Celsius and the relative humidity as a percentage (0-100).

When using Shortcut for Windows, if your version does not include specific support for the CS215, use the generic SDI12 Sensor instruction, setting the first parameter label to represent temperature and the second for relative humidity.

5.1.1 Example Program for CR10X Measuring Two Sensors Every Minute

The program below shows a simple example reading two sensors which have been set up with different addresses, one address 0 (the default) and the other with address 1; both are connected to control port 1. This example uses the aM! command for minimum power consumption.

```

;{CR10X}
;Example program for two CS215 sensors on control port 1
;Measures every minute and stores some summary statistics
;once per hour

*Table 1 Program
  01: 60          Execution Interval (seconds)

;Measure the two sensors with separate commands but with the
;same port number
;Note you have to manually assign the labels first in the Inloc Editor
;to make sure two locations are free for each sensor.

1: SDI-12 Recorder (P105)
  1: 0000      SDI-12 Address
  2: 00        SDI-12 Command
  3: 1         Port
  4: 1         Loc [ CS215T1  ]
  5: 1.0       Mult
  6: 0.0       Offset

2: SDI-12 Recorder (P105)
  1: 0001      SDI-12 Address
  2: 00        SDI-12 Command
  3: 1         Port
  4: 3         Loc [ CS215T2  ]
  5: 1.0       Mult
  6: 0.0       Offset

;Now store some statistics.
3: If time is (P92)
  1: 0         Minutes (Seconds --) into a
  2: 60        -- Interval (same units as above)
  3: 10        Set Output Flag High (Flag 0)

4: Real Time (P77)
  1: 111       Day,Hour/Minute,Seconds (midnight = 0000)

5: Sample (P70)
  1: 4         Reps
  2: 1         Loc [ CS215T1  ]

6: Average (P71)
  1: 4         Reps
  2: 1         Loc [ CS215T1  ]

7: Maximum (P73)
  1: 4         Reps
  2: 00        Time Option
  3: 1         Loc [ CS215T1  ]

8: Minimum (P74)
  1: 4         Reps
  2: 00        Time Option
  3: 1         Loc [ CS215T1  ]

*Table 2 Program
  02: 0.0000   Execution Interval (seconds)

*Table 3 Subroutines

End Program

```

5.1.2 Example CRBasic Program Measuring One Sensor Every 30 Seconds

The following example is written for the CR200 datalogger. Programs for the CR1000 and CR5000 would be similar although many instructions have extra parameters required to control the extra capability in those dataloggers. The SDI12recorder instruction also varies somewhat between the dataloggers – see the CRBasic help for the respective logger for further details.

```
'CR200 Series Datalogger
'Example program showing measurement of a single CS215 sensor every 30 sec

'Declare the variables we are going to use
Public CS215meas(2)'An array suitable to read the SDI-12 data into
Alias CS215meas(1) = Temperature
Alias CS215meas(2) = RH

'Define Data Table to hold the stored data
DataTable (CS215data,1,-1)
  DataInterval (0,15,min) 'As an example store the average every 15 mins
  Average (1,Temperature,False)
  Average (1,RH,False)
EndTable

'Main Program
BeginProg
  Scan (30,Sec) 'Scan every 30 seconds
  SDI12Recorder (CS215meas(),0R!,1.0,0) 'Read the last measured values into the array
  CallTable CS215data 'Call the table instruction to calculate and store the averages
  NextScan
EndProg
```

5.2 Measurements at Fast Scan Rates

Before considering making higher speed measurements with the CS215 it is important to understand one possible source of error. This is that the sensor element in the CS215 contains active elements so is subject to errors caused by self-heating. This is where power dissipated in the element raises its temperature leading to a slight over-reading of temperature and under reading of relative humidity. These errors will only be significant in conditions of very low windspeed and when taking measurements very frequently. For instance in still air measuring the probe at 1 second intervals will lead to an over-reading of temperature by up to 0.3°C and at 2 second intervals the error is about 0.1°C. Therefore for the best accuracy it is advisable to read to sensor no more often than every 5 seconds.

In addition to issues with self-heating the length of time a CS215 measurement takes can limit the speed at which a program table can run, especially if there are other lengthy measurements too. The following sections describe this issue and ways to optimise the program to avoid this.

5.2.1 Edlog Dataloggers

The aM! and aR! commands takes about 740 and 300 milliseconds respectively to make a measurement from the CS215. If the SDI-12 instruction is included in the main program table (table 1 in Edlog dataloggers or the main scan in CRBasic dataloggers) the program will be delayed for this interval which will limit the maximum scan rate for fast running programs.

The aR! Command would therefore be preferable in fast running programs as it takes less time to execute.

The aC! concurrent measurement command can also be used where the sensor measurement is initiated with one command and data is collected after a minimum delay of one second or any time thereafter. With Campbell Scientific dataloggers this is done by using the SDI-12 recorder instruction with the aC! command. The datalogger will return -99999 or NaN (for CRBasic loggers) for the temperature reading for the call of the instruction that initiates the measurement. At the next call of the instruction the datalogger will request the data and record the correct temperature.

5.2.2 CRBasic Dataloggers

CRBasic dataloggers that support the Slowsequence function (the CR1000 and CR5000) can run the SDI-12 instruction entirely as a background process causing minimum interference to other measurements that use the analogue hardware.

This is implemented by including the measurement in a Slowsequence section of the program, thus allowing faster programs to run as the main scan.

NOTE: For the CR5000 use a control port rather than the SDI-12 port to allow the SDI12recorder instruction to run in the slow sequence.

The example program below shows how the Slowsequence can be used to make measurements from the CS215 whilst the main scan can run at a much faster rate.

```
'CR5000 Series Datalogger
'Example program showing measurement of a single CS215 sensor every 30 sec
'in the slow sequence

'Declare the variables we are going to use
Public Batt_Volt, PTemp, CS215meas(2)      'An array suitable to reading the SDI12 data
into
Alias CS215meas(1) = Temperature
Alias CS215meas(2) = RH

'Main Program - in this example it is running fast just measuring the
'battery voltage and panel temperature
BeginProg
  Scan (50,mSec,0,0) 'Scan every 50 milliseconds
    PanelTemp (PTemp,250)
    Battery (Batt_volt)
  NextScan

SlowSequence

'Define Data Table to hold the stored data for the CS215
DataTable (CS215dat,1,-1)
  DataInterval (0,15,min,1) 'As an example store the average every 15 mins
Average (1,Temperature,IEEE4,False)
Average (1,RH,IEEE4,False)
EndTable

Scan (30,sec,0,0)
SDI12Recorder (CS215meas(),1,0M!,1.0,0) 'Read the values into the array

'NOTE: we had to use a control port for SDI-12 as this is in the slow sequence
```

```
CallTable CS215dat 'Call the table instruction to calculate and store the Avs
NextScan
```

```
EndProg
```

6. Changing the SDI-12 Address Using LoggerNet and a Datalogger

Up to ten CS215s or other SDI-12 sensors can be connected to a single datalogger control port. Each SDI-12 device must have a unique SDI-12 address between 0 and 9. (The CS215 also supports the extended range up to 126.)

The factory-set SDI-12 address for the CS215 is 0. The CS215 SDI-12 address is changed in software by issuing the aAb! command to the CS215 over the SDI-12 interface, where *a* is the current address and *b* is the new address. The current address can be found by issuing the ?! command.

The address *can* be changed by loading a program into the datalogger that includes an instruction to send the aAb! command to change the sensor from its old address “a” to new address “b”. (For an Edlog datalogger this involves using instruction 105 with the character “A” followed by the character for the new address sent as extended commands, using P68. Refer to the datalogger manual for further details. CRBasic programs can simply have the aAb string embedded as the string command.)

However, changing the address using a program is not the simplest way as most Campbell Scientific dataloggers (with the exception of the CR5000 at present) support a method of directly interacting with SDI-12 sensors via a terminal emulator. This allows you to get confirmation that the change of address has worked, using the ?! command. This can be done using a computer running LoggerNet to issue any valid SDI-12 command through the datalogger to the CS215 as described in the following sections.

6.1 Array-Based “Edlog” Dataloggers

1. Connect a single CS215 to the datalogger using Control Port *p* as described in Section 4, and download a datalogger program that contains the SDI-12 Recorder (Instruction 105) instruction with valid entries for each parameter.
2. In the LoggerNet Toolbar, navigate to and activate the Test|Terminal Emulator... menu. The “Terminal Emulator” window opens. In the Select Device menu, located in the lower left hand side of the window, select the station.
3. Click on the Open Terminal button. If communications between the datalogger and PC are successful, the red bar located in the upper left hand side of the window, will turn green.
4. Click inside the “Terminal Emulator” window and press the <enter> key until the datalogger responds with the “*” prompt.
5. To activate the SDI-12 Transparent Mode on Control Port *p*, enter *pX* and press the <enter> key. The datalogger will respond with **entering SDI-12**. If any invalid SDI-12 command is issued, the datalogger will exit the SDI-12 Transparent Mode.
6. To query the CS215 for its current SDI-12 address, enter the command ?!. The CS215 will respond with the current SDI-12 address.

7. To change the SDI-12 address, enter the command $aAb!$; where a is the current address from the above step and b is the new address. The CS215 will change its address and the datalogger will exit the SDI-12 Transparent Mode.
8. To activate the SDI-12 Transparent Mode on Control Port p , enter pX and press the <enter> key. Verify the new SDI-12 address by entering the $?!$ command. The CS215 will respond with the new address.
9. To exit the SDI-12 Transparent Mode, enter $*$.

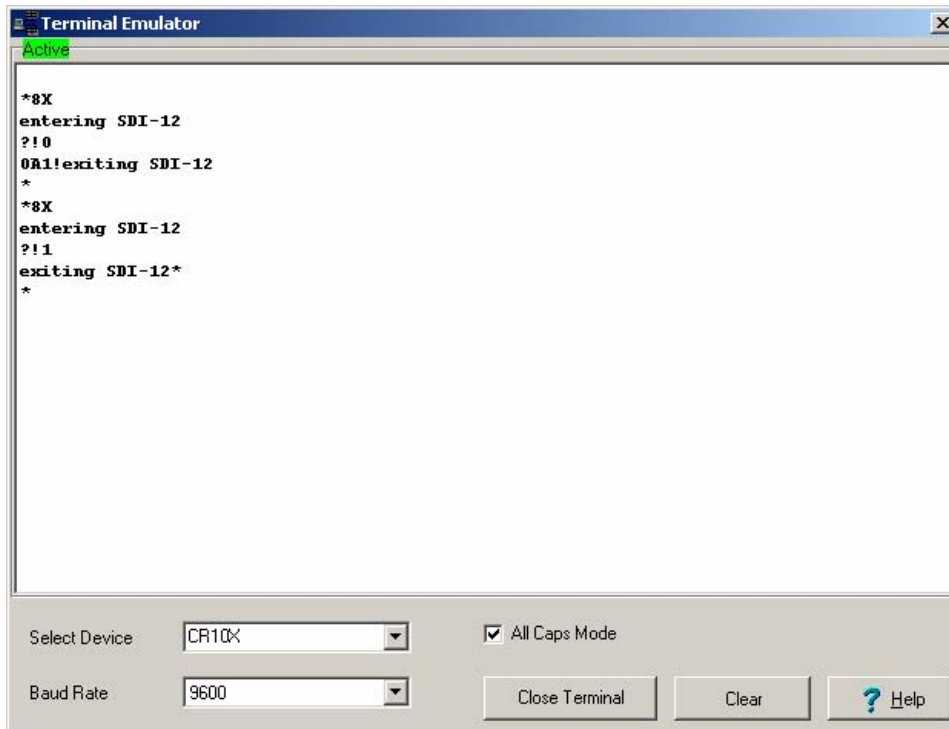


FIGURE 1. Screen Capture of SDI-12 Transparent Mode on Edlog Array-Based Datalogger (CR10X) using Control Port 8 and Changing SDI-12 Address from 0 to 1

6.2 Table-Based “Edlog” Dataloggers

1. Connect a single CS215 to the datalogger Control Port p as described in Section 4, and download a datalogger program that contains the SDI-12 Recorder (Instruction 105) instruction with valid entries for each parameter.
2. In the LoggerNet Toolbar, navigate to and activate the Test|Terminal Emulator ... menu. The “Terminal Emulator” window will open. In the Select Device menu, located in the lower left hand side of the window, select the station.
3. Click on the Open Terminal button. If communications between the datalogger and PC are successful, the red bar located in the upper left hand side of the window, will turn green.
4. Click inside the “Terminal Emulator” window and press the <enter> key until the TD datalogger responds with the “>” prompt.

5. To activate the SDI-12 transparent mode on Control Port *p*, enter ***8**. The TD datalogger will respond with a "*" prompt. At the "*" prompt enter **#**. The TD datalogger will respond with **150000**. Finally, enter *p* (Control Port *p*) and press the <enter> key. The TD datalogger will respond with **entering SDI-12**.
6. To query the CS215 for its current SDI-12 address, enter the command **?!**. The CS215 will respond with the current SDI-12 address.
7. To change the SDI-12 address, enter the command **aAb!**; where *a* is the current address from the above step and *b* is the new address. The CS215 will change its address and the datalogger will exit the SDI-12 Transparent Mode.
8. To activate the SDI-12 transparent mode, on Control Port *p*, enter ***8**. The TD datalogger will respond with a "*" prompt. At the "*" prompt enter **#**. The TD datalogger will respond with **150000**. Finally, enter *p* (Control Port *p*) and press the <enter> key. The TD datalogger will respond with **entering SDI-12**. Verify the new SDI-12 address by entering the **?!** command. The CS215 will respond with the new address.
9. To exit the SDI-12 Transparent Mode, type in *****.

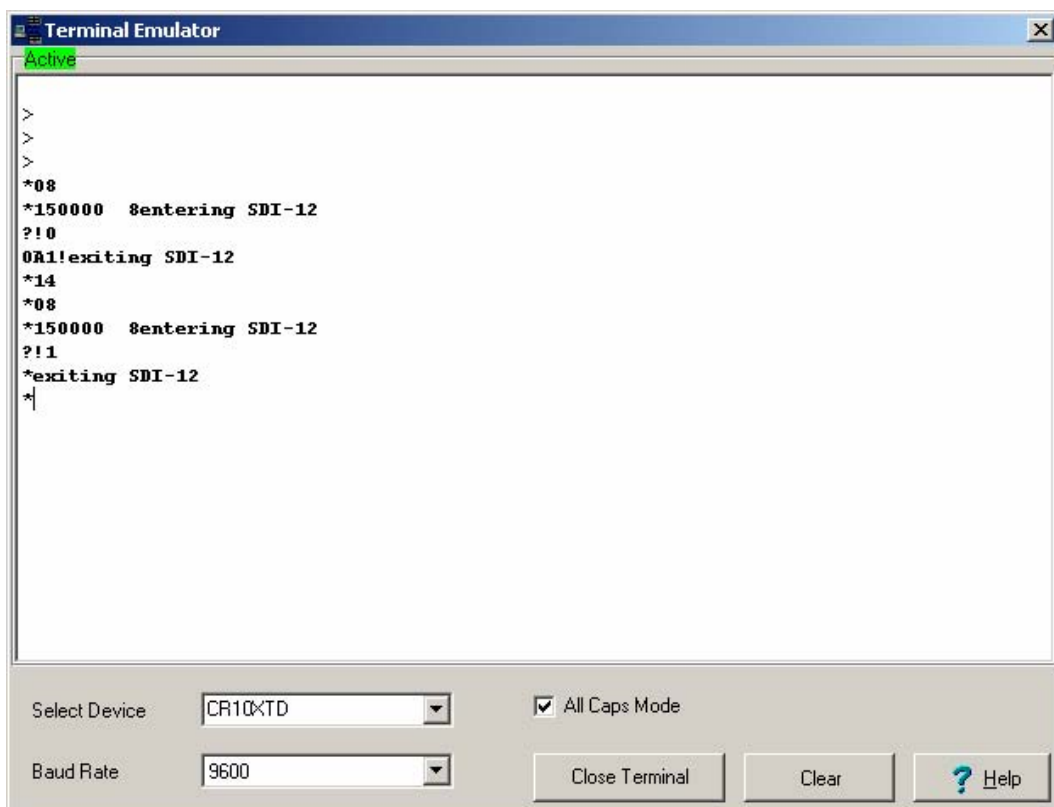


FIGURE 2. Screen Capture of SDI-12 Transparent Mode on Edlog Table Based Datalogger using Control Port 8 and Changing SDI-12 Address from 0 to 1

6.3 CR200 Series Datalogger

1. Connect a single CS215 to the datalogger using Control Port C1/SDI12 as described in Section 4, and download a datalogger program that does not contain the SDI12Recorder () instruction.
2. In the LoggerNet Toolbar, navigate to and activate the Test|Terminal Emulator ... menu. The "Terminal Emulator" window will open. In the Select Device menu, located in the lower left hand side of the window, select the station.
3. Click on the Open Terminal button. If communications between the datalogger and PC are successful, the red bar located in the upper left hand side of the window, will turn green.
4. Press the <enter> key until the datalogger responds with the "**CR200>**" prompt.
5. To query the CS215 for its current SDI-12 address, press the <enter> key, at the "**CR200>**" prompt, make sure you are in Caps Lock mode and enter the command **SDI12>?!0** and press the <enter> key. The CS215 will respond with the SDI-12 address.
6. To change the SDI-12 address, press the <enter> key. At the "**CR200>**" prompt enter the command **SDI12>aAb!** Where *a* is the current address (shown in the above step) and *b* is the new address. The CS215 will change its address and the datalogger will exit the SDI-12 Transparent Mode and respond with "**Fail**".
7. Verify the new SDI-12 address. Press the <enter> key, at the "**CR200>**" prompt enter the command **SDI12>?!1** and press the <enter> key. The CS215 will respond with the new address.

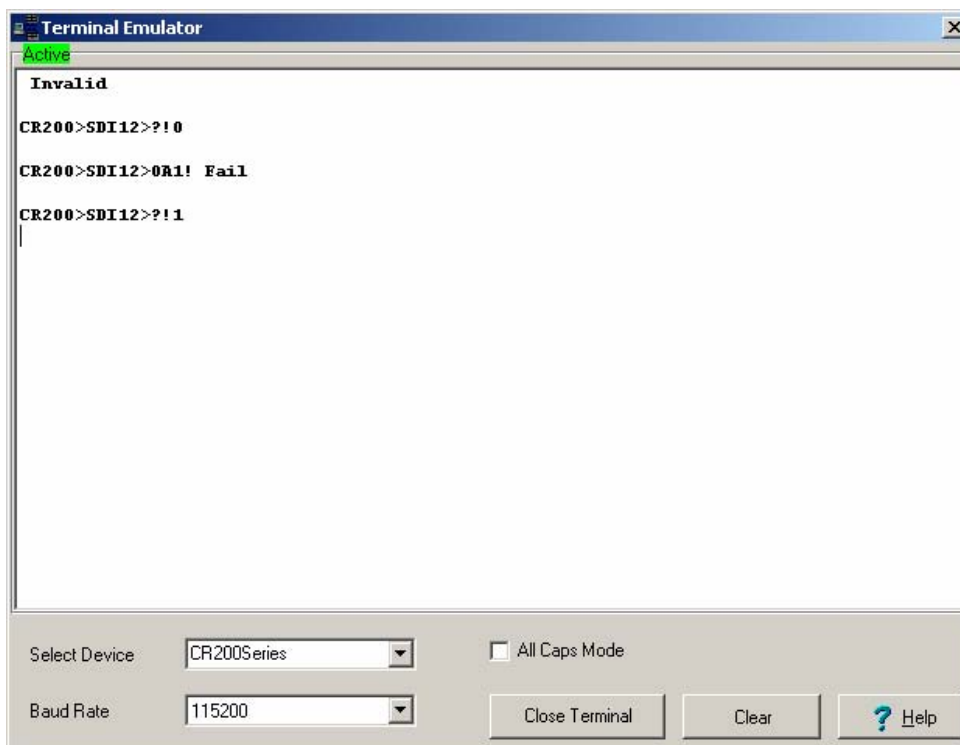


FIGURE 3. Screen Capture of SDI-12 Transparent Mode on CRBasic CR200 Series Datalogger using Control Port C1/SDI12 and Changing SDI-12 Address from 0 to 1

6.4 CR1000 Datalogger

The CR1000 datalogger supports changing the address in a similar way to the CR200. In terminal mode issue the SDI12 command, then give the control port number in response to the prompt. The normal SDI12 command can then be entered (there is no need to enter the “SDI12” prefix as with the CR200). If changing the address you will initially get a “fail” message (as with the CR200). To terminate the SDI12 terminal mode press <enter> with no command.

7. Maintenance and Calibration

The CS215 probe requires minimal maintenance.

- Check monthly to make sure that the radiation shield is free from dust and debris.
- Clear the white filter on the end of the sensor of similar debris. If dirt or salt is engrained into the filter it should be cleaned with clean water or more simply replaced. Make sure the filter is done up firmly with your fingers – do not over tighten.

The life of the humidity chip element is quoted as many years with a typical drift of less than 1% per year when used in ‘clean’ environments. However, as it can be difficult to define what the sensor has been exposed to and as the element of the CS215 is relatively low cost we recommend that you replace the sensor element at the normal interval you would recalibrate similar probes, e.g. annually. Replacing the element effectively brings the probe back to a factory calibration state both for temperature and RH without incurring a costly return for factory calibration.

If you wish to have an old element’s calibration checked so that you can formally record the probe’s pre-calibration state (pre-sensor replacement), you can measure its performance by plugging it into another sensor. For a fee, Campbell Scientific can provide a certificate of performance for sensor elements returned to them.

7.1 Sensor Element Replacement

To replace the element:

1. Disconnect the sensor from the 12 V power supply.
2. Remove the filter by unscrewing it in an anti-clockwise direction when looking towards the tip of the sensor.

CAUTION: The filter cap unscrews from the probe. Attempting to pull it off will destroy it.

3. Identify the sensor element referring to figure 4a below, which shows a side-on view of the end of the probe and sensor element. Before removing the element carefully study the probe and note its orientation after reading the following description:
 - The element plugs into the black plastic socket that protrudes by about 1mm from the end of the metal body of the sensor.
 - There are eight holes in the socket, whilst the element only has four pins in line.
 - The element will work when fitted into either side of socket but must be installed in one of the two possible orientations to work.

- The correct orientation is with the black moulded tip of the element (that contains the sensing components) mounted directly above the centre of the socket.
- Figure 4a shows the correct orientation, whilst figure 4b shows the incorrect orientation

CAUTION: If the sensor is inserted in one of the wrong orientations it will not work, excessive power will be drawn from the supply and the element may be damaged if left powered in this state for more than a few seconds.

4. Once the correct orientation of the probe is identified, first make sure that your hands are clean to avoid getting dirt or grease on the element.
5. Grasp the body of the sensor (this also ensures you are at the same electrical potential as the element) and holding the black tip of the element between your finger tips pull the element out of the socket. Store the old element in electrostatic protective packaging if you wish to retain it.
6. With the element removed check for dirt and/or corrosion around the socket. Clean any dirt away using a damp cloth to remove any salts that might be there.
7. Unpack the replacement element making sure that you touch the packaging rather than the element first to avoid static discharges directly to the element.
8. Either hold the element by the black top of the package (the other end to the gold plated pins) or use a pair of fine nosed pliers or tweezers to grip the sensor by the pins. Carefully offer up the pins to the socket in the end of probe.
9. Confirm the correct orientation and then gently push the pins into the socket until they will not go in any further.
10. Before replacing the filter element and turning on the power to the sensor double-check the sensor is inserted in the correct orientation, referring to Figure 4.
11. Screw the filter back onto the end of the probe making sure it clears the sensor element. If the element appears too close to the filter there is a fair chance that it has been inserted in the incorrect orientation or that the legs of the element have been bent. Screw the filter onto the thread and tighten gently with your fingers.

CAUTION: Only tighten the filter approximately $\frac{1}{8}$ th of a turn by hand when the filter is fully screwed onto the thread. Over tightening the filter will damage it and cause problems in inserting and removing the probe from some shields.

NOTE: It is virtually impossible to touch and damage the sensing elements which are enclosed within the black moulded plastic at the tip. However, if during the process of handling the element dirt, salt or grease are left on the plastic it may influence the measurements made.

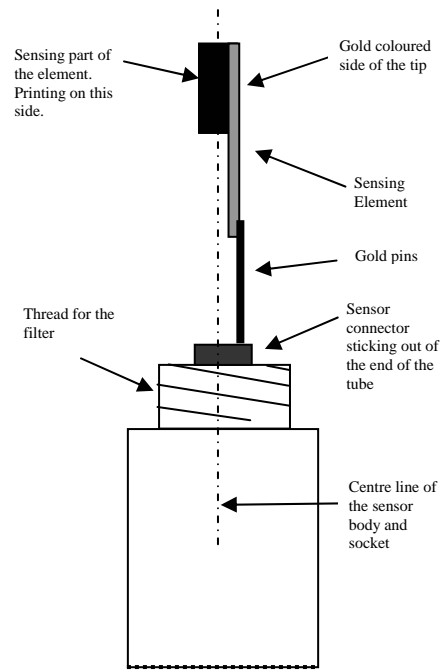


Figure 4a Correct Fitment of Sensor Element (Side View)

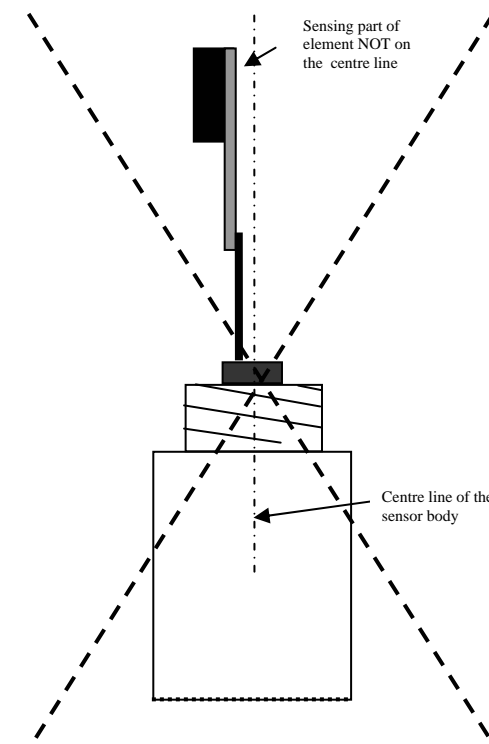


Figure 4b Incorrect Fitment of Sensor Element (Side View)

Appendix A. Environmental Performance

This Appendix details tests and limitations of the sensor when exposed to extremes of the environment.

A.1 Tests to Defined Standards

The sensor element has been tested by the manufacturer and found to comply with various environmental test standards as shown in the table below:

Table A-1 Environmental Tests

Environment	Norm	Results
Temperature Cycles	JESD22-A104-B - 40/+125°C, 1000 cycles	Within Specifications
HAST Pressure Cooker	JESD22-A110-B 2.3bar 125°C 85%RH	Reversible shift by +2%RH
Salt Atmosphere	DIN-50021SS	Within Specifications
Condensing Air	-	Within Specifications
Freezing cycles fully submerged	-20/+90°C, 100cycles, 30min dwell time	Reversible shift by +2%RH
Various Automotive Chemicals	DIN 72300-5	Within Specifications
Cigarette smoke	Equivalent to 15years in a mid-size car	Within Specifications

N.B. The temperature sensor passed all tests without any detectable drift. Package and electronics also passed 100%

A.2 Exposure to Pollutants

All capacitive sensors are susceptible to pollutants to some degree. The vapours may interfere with the polymer layers used in the structure of the sensing element. The diffusion of chemicals into the polymer may cause temporary or even permanent shifts in both offset and sensitivity.

After low levels of exposure, in a clean environment the contaminants will slowly outgas and the sensor recover. High levels of pollutants may cause permanent damage to the sensing polymer.

As a general rule the sensor will not be damaged by levels of chemicals which are not too dangerous to human health (see table A-1) so damage is not normally a problem in outdoor applications. Avoid exposing the sensor to chemicals at higher concentrations.

A.3 Operating Range of RH Element

The RH sensor is specified to work over the entire humidity range of 0-100% RH for the temperature range -20 to +60°C. It will give readings over an extended range as shown in the figure below (although the electronics of the CS215 probe are not specified to operate beyond +70°C).

When used outside the range of normal conditions or when subject to prolonged periods of condensation or freezing the sensor calibration may be temporarily altered, normally resulting in a change of $<+3\%$ RH. Once the sensor returns to normal conditions the calibration will settle back, over the course of several days, to the “standard” calibration. In laboratory conditions it is possible to speed up this process by a reconditioning process, as follows: 80-90 °C at $< 5\%$ RH for 24h (baking) followed by 20-30 °C at $> 74\%$ RH for 48h (re-hydration).

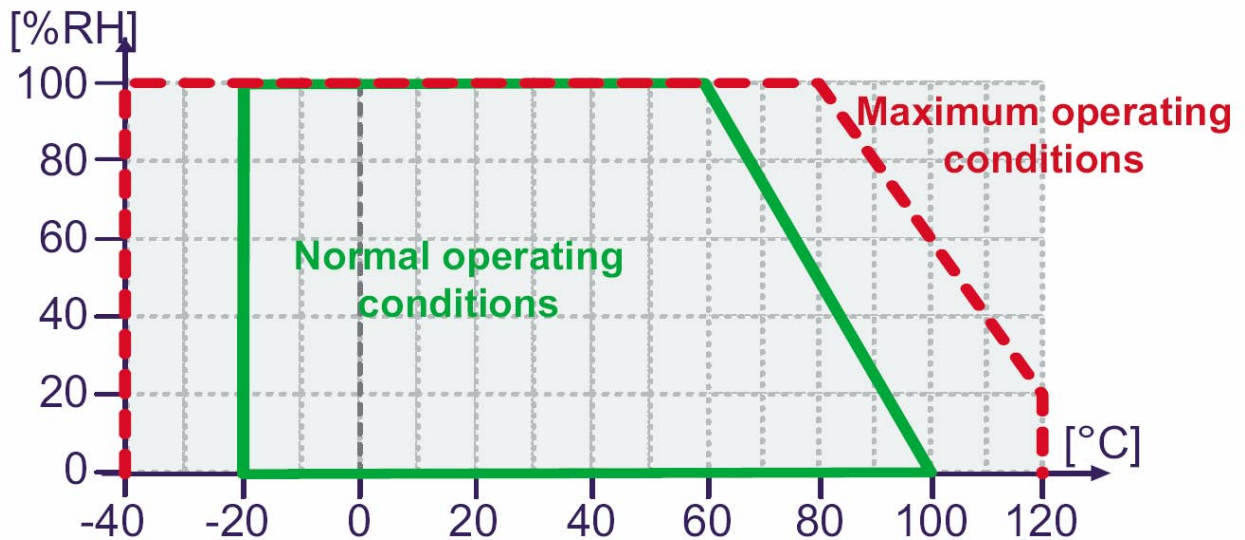


Figure A-1 Normal Operating Conditions of RH Element

A.4 Measurement below 0°C

The CS215 provides a humidity reading that is referenced to the saturated water vapour pressure above liquid water, even at temperatures below 0°C, where ice might form. This is the common way to express relative humidity and is as defined by the World Meteorological Organization. If an RH value is required referenced to ice the CS215 readings will need to be corrected.

One consequence of using water as the reference is that the maximum humidity that will normally be output by the sensor for temperatures below freezing is as follows:

- 100%RH at 0°C
- 95%RH at -5°C
- 91%RH at -10°C
- 87%RH at -15°C
- 82%RH at -20°C
- 78%RH at -25°C
- 75%RH at -30°C

In practical terms this means that, for instance, at -20°C the air is effectively fully saturated when the sensor outputs 82%RH.

Appendix B. Sensor Element Calibration

The sensor elements are individually calibrated during manufacture. The manufacturer publishes the certificate below as proof of traceability.

CERTIFICATION

SENSIRION
THE SENSOR COMPANY

Product: **SHTxx Family**
Description: **Digital Humidity and Temperature Sensor**

This is to certify that above product is calibrated using dedicated equipment which is calibrated according to **ISO/IEC 17025** and calibrated by comparison against natural standards, natural physical constants, consensus standards, or by ratio type measurements using self-calibrating techniques.

Standards incorporated to establish this comparison are NIST and NPL traceable.



Date of Certification: **February 2003**

Valid till: **March 2005**

Zurich, March 2004

A handwritten signature in black ink, appearing to be "D. G.", written over a horizontal line.

CEO, Sensirion AG

A handwritten signature in black ink, appearing to be "A. Klein", written over a horizontal line.

Quality Assurance Manager, Sensirion AG

Campbell Scientific Companies

Campbell Scientific, Inc. (CSI)

815 West 1800 North
Logan, Utah 84321
UNITED STATES
www.campbellsci.com
info@campbellsci.com

Campbell Scientific Africa Pty. Ltd. (CSAf)

PO Box 2450
Somerset West 7129
SOUTH AFRICA
www.csafrica.co.za
sales@csafrica.co.za

Campbell Scientific Australia Pty. Ltd. (CSA)

PO Box 444
Thuringowa Central
QLD 4812 AUSTRALIA
www.campbellsci.com.au
info@campbellsci.com.au

Campbell Scientific do Brazil Ltda. (CSB)

Rua Luisa Crapsi Orsi, 15 Butantã
CEP: 005543-000 São Paulo SP BRAZIL
www.campbellsci.com.br
suporte@campbellsci.com.br

Campbell Scientific Canada Corp. (CSC)

11564 - 149th Street NW
Edmonton, Alberta T5M 1W7
CANADA
www.campbellsci.ca
dataloggers@campbellsci.ca

Campbell Scientific Ltd. (CSL)

Campbell Park
80 Hathern Road
Shepshed, Loughborough LE12 9GX
UNITED KINGDOM
www.campbellsci.co.uk
sales@campbellsci.co.uk

Campbell Scientific Ltd. (France)

Miniparc du Verger - Bat. H
1, rue de Terre Neuve - Les Ulis
91967 COURTABOEUF CEDEX
FRANCE
www.campbellsci.fr
campbell.scientific@wanadoo.fr

Campbell Scientific Spain, S. L.

Psg. Font 14, local 8
08013 Barcelona
SPAIN
www.campbellsci.es
info@campbellsci.es

Please visit www.campbellsci.com to obtain contact information for your local US or International representative.